

Product datasheet for **TA376870**

GTPBP8 Rabbit Polyclonal Antibody

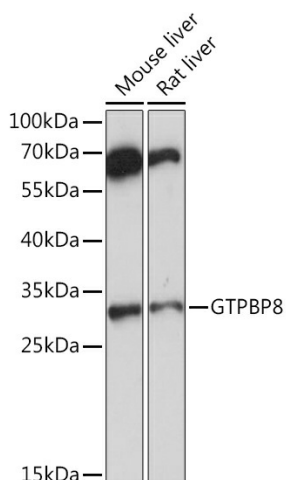
Product data:

Product Type:	Primary Antibodies
Applications:	ICC/IF, IHC, WB
Recommended Dilution:	WB,1:500 - 1:2000 IHC,1:50 - 1:200 IF,1:50 - 1:200
Reactivity:	Human, Mouse, Rat
Modifications:	Unmodified
Host:	Rabbit
Isotype:	IgG
Clonality:	Polyclonal
Immunogen:	Recombinant fusion protein containing a sequence corresponding to amino acids 1-170 of human GTPBP8 (NP_054889.2).
Formulation:	Buffer: PBS with 0.02% sodium azide,50% glycerol,pH7.3.
Concentration:	lot specific
Purification:	Affinity purification
Conjugation:	Unconjugated
Storage:	Store at -20°C. Avoid freeze / thaw cycles.
Stability:	Shelf life: one year from despatch.
Predicted Protein Size:	13kDa/28kDa/32kDa
Gene Name:	GTP binding protein 8 (putative)
Database Link:	Entrez Gene 29083 Human Q8N3Z3
Synonyms:	HSPC135

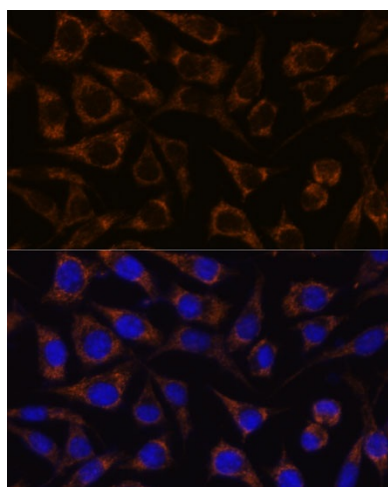


[View online »](#)

Product images:



Western blot analysis of extracts of various cell lines, using GTPBP8 Rabbit pAb (TA376870) at 1:1000 dilution. | Secondary antibody: HRP Goat Anti-Rabbit IgG (H+L) at 1:10000 dilution. | Lysates/proteins: 25ug per lane. | Blocking buffer: 3% nonfat dry milk in TBST. | Detection: ECL Enhanced Kit . | Exposure time: 20s.



Immunofluorescence analysis of L929 cells using GTPBP8 antibody (TA376870) at dilution of 1:100. Blue: DAPI for nuclear staining.