

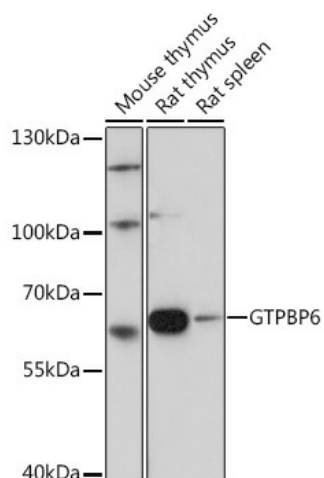
Product datasheet for **TA376869S**

GTPBP6 Rabbit Polyclonal Antibody

Product data:

Product Type:	Primary Antibodies
Applications:	ELISA, ICC/IF, WB
Recommended Dilution:	WB, 1:500 - 1:2000 IF/ICC, 1:50 - 1:200 ELISA, Recommended starting concentration is 1 µg/mL. Please optimize the concentration based on your specific assay requirements.
Reactivity:	Human, Mouse, Rat
Host:	Rabbit
Isotype:	IgG
Clonality:	Polyclonal
Formulation:	Buffer: PBS with 0.02% sodium azide, 50% glycerol, pH7.3.
Concentration:	lot specific
Purification:	Affinity purification
Conjugation:	Unconjugated
Storage:	Store at -20°C. Avoid freeze / thaw cycles.
Stability:	Shelf life: one year from despatch.
Predicted Protein Size:	57kDa
Gene Name:	GTP binding protein 6 (putative)
Database Link:	Entrez Gene 8225 Human O43824
Background:	This gene encodes a GTP binding protein and is located in the pseudoautosomal region (PAR) at the end of the short arms of the X and Y chromosomes.
Synonyms:	FLJ20977; FLJ22809; FLJ56662; FLJ56805; FLJ90047; PGPL

[View online »](#)

Product images:


Western blot analysis of various lysates using GTPBP6 Rabbit pAb (TA376869) at 1:1000 dilution.

Secondary antibody: HRP-conjugated Goat anti-Rabbit IgG (H+L) (AS014) at 1:10000 dilution.

Lysates/proteins: 25µg per lane.

Blocking buffer: 3% nonfat dry milk in TBST.

Detection: ECL Basic Kit (RM00020).

Exposure time: 30s.