

Product datasheet for **TA376865**

GTPBP1 Rabbit Polyclonal Antibody

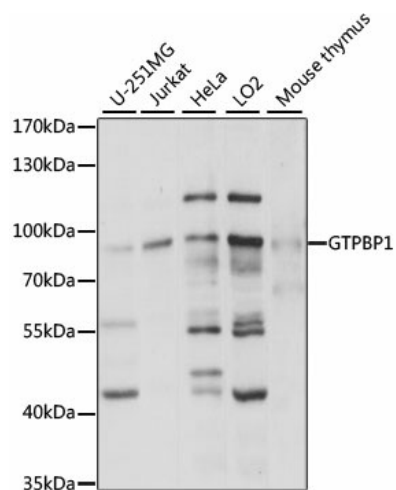
Product data:

Product Type:	Primary Antibodies
Applications:	WB
Recommended Dilution:	WB,1:200 - 1:2000
Reactivity:	Human, Mouse
Modifications:	Unmodified
Host:	Rabbit
Isotype:	IgG
Clonality:	Polyclonal
Immunogen:	Recombinant fusion protein containing a sequence corresponding to amino acids 10-280 of human GTPBP1 (NP_004277.2).
Formulation:	Buffer: PBS with 0.02% sodium azide,50% glycerol,pH7.3.
Concentration:	lot specific
Purification:	Affinity purification
Conjugation:	Unconjugated
Storage:	Store at -20°C. Avoid freeze / thaw cycles.
Stability:	Shelf life: one year from despatch.
Predicted Protein Size:	72kDa
Gene Name:	GTP binding protein 1
Database Link:	Entrez Gene 9567 Human O00178
Background:	This gene is upregulated by interferon-gamma and encodes a protein that is a member of the AGP11/GTPBP1 family of GTP-binding proteins. A structurally similar protein has been found in mouse, where disruption of the gene for that protein had no observable phenotype.
Synonyms:	GP-1; GP1; HSPC018; MGC20069



[View online »](#)

Product images:



Western blot analysis of extracts of various cell lines, using GTPBP1 antibody (TA376865) at 1:1000 dilution. | Secondary antibody: HRP Goat Anti-Rabbit IgG (H+L) at 1:10000 dilution. | Lysates/proteins: 25ug per lane. | Blocking buffer: 3% nonfat dry milk in TBST. | Detection: ECL Basic Kit . | Exposure time: 3s.