

Product datasheet for **TA376856**

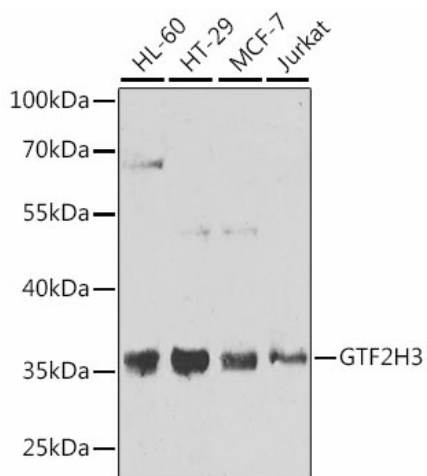
GTF2H3 Rabbit Polyclonal Antibody

Product data:

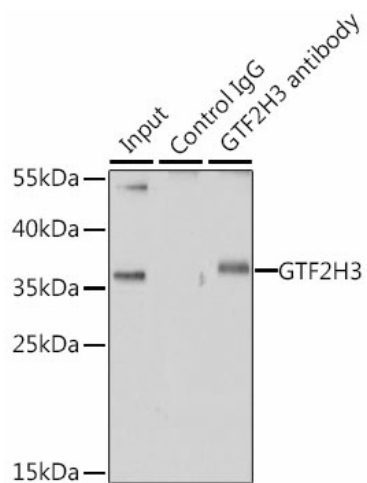
| | |
|-------------------------|---|
| Product Type: | Primary Antibodies |
| Applications: | IP, WB |
| Recommended Dilution: | WB,1:500 - 1:2000 IP,1:50 - 1:200 |
| Reactivity: | Human, Mouse |
| Modifications: | Unmodified |
| Host: | Rabbit |
| Isotype: | IgG |
| Clonality: | Polyclonal |
| Immunogen: | Recombinant fusion protein containing a sequence corresponding to amino acids 1-308 of human GTF2H3 (NP_001507.2). |
| Formulation: | Buffer: PBS with 0.02% sodium azide,50% glycerol,pH7.3. |
| Concentration: | lot specific |
| Purification: | Affinity purification |
| Conjugation: | Unconjugated |
| Storage: | Store at -20°C. Avoid freeze / thaw cycles. |
| Stability: | Shelf life: one year from despatch. |
| Predicted Protein Size: | 29kDa/34kDa |
| Gene Name: | general transcription factor IIH subunit 3 |
| Database Link: | Entrez Gene 2967 Human Q13889 |
| Background: | This gene encodes a member of the TFB4 family. The encoded protein is a subunit of the core-TFIID basal transcription factor and localizes to the nucleus. The encoded protein is involved in RNA transcription by RNA polymerase II and nucleotide excision repair and associates with the Cdk-activating kinase complex. Alternative splicing results in multiple transcript variants. A related pseudogene has been identified on chromosome 14. |
| Synonyms: | BTF2; BTF2-p34; TFB4; TFIID |



[View online »](#)

Product images:


Western blot analysis of extracts of various cell lines, using GTF2H3 antibody (TA376856) at 1:1000 dilution. | Secondary antibody: HRP Goat Anti-Rabbit IgG (H+L) at 1:10000 dilution. | Lysates/proteins: 25ug per lane. | Blocking buffer: 3% nonfat dry milk in TBST. | Detection: ECL Basic Kit. | Exposure time: 10s.



Immunoprecipitation analysis of 200ug extracts of HT-29 cells using 1ug GTF2H3 antibody (TA376856). Western blot was performed from the immunoprecipitate using GTF2H3 antibody (TA376856) at a dilution of 1:1000.