

## Product datasheet for **TA376852S**

### GTF2H1 Rabbit Polyclonal Antibody

#### Product data:

Product Type:	Primary Antibodies
Applications:	ICC/IF, WB
Recommended Dilution:	WB,1:500 - 1:1000 IF,1:50 - 1:200
Reactivity:	Human, Mouse, Rat
Modifications:	Unmodified
Host:	Rabbit
Isotype:	IgG
Clonality:	Polyclonal
Immunogen:	Recombinant fusion protein containing a sequence corresponding to amino acids 1-425 of human GTF2H1 (NP_001135779.1).
Formulation:	Buffer: PBS with 0.02% sodium azide,50% glycerol,pH7.3.
Concentration:	lot specific
Purification:	Affinity purification
Conjugation:	Unconjugated
Storage:	Store at -20°C. Avoid freeze / thaw cycles.
Stability:	Shelf life: one year from despatch.
Predicted Protein Size:	48kDa/62kDa
Gene Name:	general transcription factor IIH subunit 1
Database Link:	<a href="#">Entrez Gene 2965 Human P32780</a>



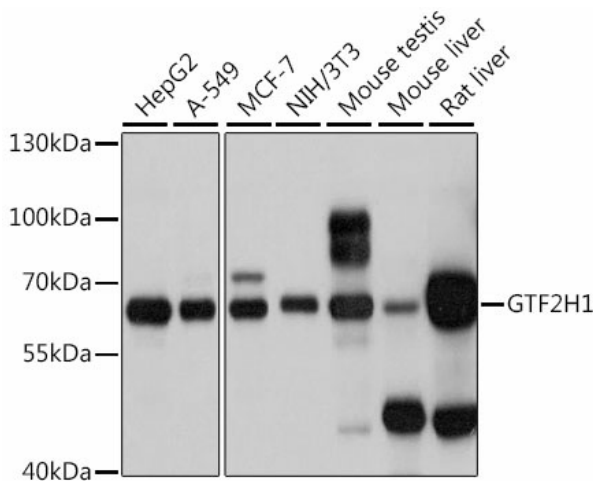
[View online »](#)

**Background:**

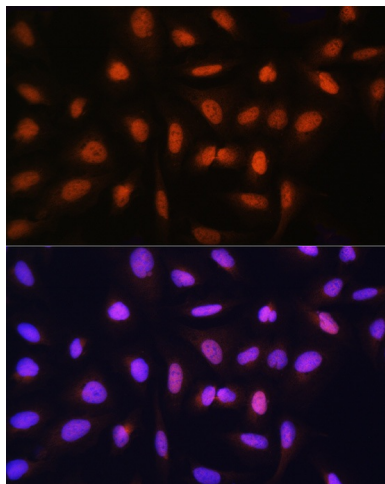
Component of the general transcription and DNA repair factor IIH (TFIIH core complex, which is involved in general and transcription-coupled nucleotide excision repair (NER of damaged DNA and, when complexed to CAK, in RNA transcription by RNA polymerase II. In NER, TFIIH acts by opening DNA around the lesion to allow the excision of the damaged oligonucleotide and its replacement by a new DNA fragment. In transcription, TFIIH has an essential role in transcription initiation. When the pre-initiation complex (PIC) has been established, TFIIH is required for promoter opening and promoter escape. Phosphorylation of the C-terminal tail (CTD of the largest subunit of RNA polymerase II by the kinase module CAK controls the initiation of transcription.

**Synonyms:**

BTF2; BTF2-p62; TFB1; TFIIH

**Product images:**


Western blot analysis of extracts of various cell lines, using GTF2H1 antibody ([TA376852]) at 1:1000 dilution. | Secondary antibody: HRP Goat Anti-Rabbit IgG (H+L) at 1:10000 dilution. | Lysates/proteins: 25ug per lane. | Blocking buffer: 3% nonfat dry milk in TBST. | Detection: ECL Basic Kit . | Exposure time: 1s.



Immunofluorescence analysis of U-2 OS cells using GTF2H1 Rabbit pAb ([TA376852]) at dilution of 1:100 (40x lens). Blue: DAPI for nuclear staining.