

Product datasheet for **TA376849S**

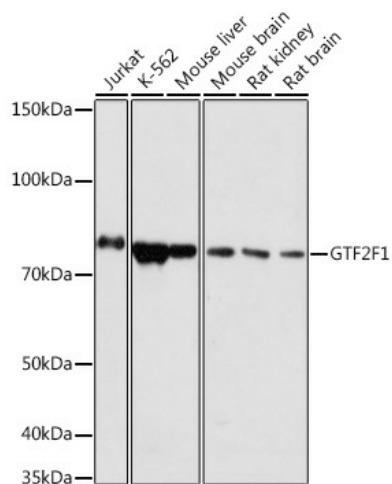
TFIIF (GTF2F1) Rabbit Polyclonal Antibody

Product data:

Product Type:	Primary Antibodies
Applications:	ELISA, WB
Recommended Dilution:	WB, 1:500 - 1:2000 ELISA, Recommended starting concentration is 1 µg/mL. Please optimize the concentration based on your specific assay requirements.
Reactivity:	Human, Mouse, Rat
Host:	Rabbit
Isotype:	IgG
Clonality:	Polyclonal
Formulation:	Buffer: PBS with 0.02% sodium azide, 50% glycerol, pH 7.3.
Concentration:	lot specific
Purification:	Affinity purification
Conjugation:	Unconjugated
Storage:	Store at -20°C. Avoid freeze / thaw cycles.
Stability:	Shelf life: one year from despatch.
Predicted Protein Size:	58kDa
Gene Name:	general transcription factor IIF subunit 1
Database Link:	Entrez Gene 2962 Human P35269
Background:	Enables several functions, including RNA polymerase II general transcription initiation factor activity; phosphatase activator activity; and promoter-specific chromatin binding activity. Involved in several processes, including positive regulation of transcription by RNA polymerase II; response to virus; and transcription initiation from RNA polymerase II promoter. Located in cell junction and nucleoplasm. Part of transcription factor TFIID complex.
Synonyms:	BTF4; RAP74; TF2F1; TFIIF; TFIIF-alpha

[View online »](#)

Product images:



Western blot analysis of various lysates using GTF2F1 Rabbit pAb (TA376849) at 1:1000 dilution.

Secondary antibody: HRP-conjugated Goat anti-Rabbit IgG (H+L) (AS014) at 1:10000 dilution.

Lysates/proteins: 25µg per lane.

Blocking buffer: 3% nonfat dry milk in TBST.

Detection: ECL Basic Kit (RM00020).

Exposure time: 1s.