

Product datasheet for **TA376847S**

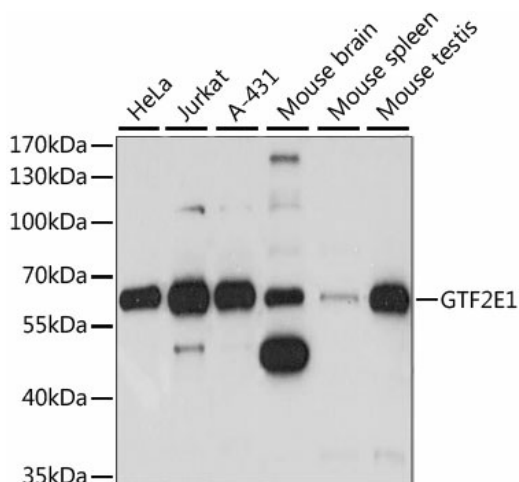
TFIIE alpha (GTF2E1) Rabbit Polyclonal Antibody

Product data:

Product Type:	Primary Antibodies
Applications:	ELISA, ICC/IF, WB
Recommended Dilution:	WB, 1:200 - 1:2000 IF/ICC, 1:50 - 1:200 ELISA, Recommended starting concentration is 1 µg/mL. Please optimize the concentration based on your specific assay requirements.
Reactivity:	Human, Mouse, Rat
Modifications:	Unmodified
Host:	Rabbit
Isotype:	IgG
Clonality:	Polyclonal
Formulation:	Buffer: PBS with 0.02% sodium azide, 50% glycerol, pH 7.3.
Concentration:	lot specific
Purification:	Affinity purification
Conjugation:	Unconjugated
Storage:	Store at -20°C. Avoid freeze / thaw cycles.
Stability:	Shelf life: one year from despatch.
Predicted Protein Size:	49kDa
Gene Name:	general transcription factor IIE subunit 1
Database Link:	Entrez Gene 2960 Human P29083
Background:	Enables RNA polymerase II general transcription initiation factor activity. Involved in transcription by RNA polymerase II. Located in cytosol and nucleoplasm. Part of transcription factor TFIID complex and transcription preinitiation complex.
Synonyms:	FE; TF2E1; TFIIE-A; TFIIE-alpha


[View online »](#)

Product images:



Western blot analysis of various lysates using GTF2E1 Rabbit pAb ([TA376847]) at 1:1000 dilution.

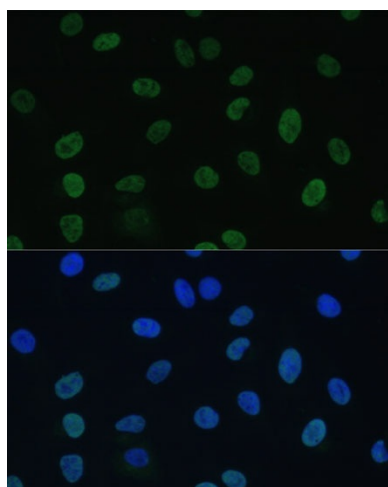
Secondary antibody: HRP-conjugated Goat anti-Rabbit IgG (H+L) (AS014) at 1:10000 dilution.

Lysates/proteins: 25µg per lane.

Blocking buffer: 3% nonfat dry milk in TBST.

Detection: ECL Basic Kit (RM00020).

Exposure time: 5S.



Immunofluorescence analysis of U-2 OS cells using GTF2E1 Rabbit pAb ([TA376847]) at dilution of 1:100 (40x lens). Secondary antibody: Cy3-conjugated Goat anti-Rabbit IgG (H+L) (AS007) at 1:500 dilution. Blue: DAPI for nuclear staining.