

## Product datasheet for **TA376847**

### TFIIIE alpha (GTF2E1) Rabbit Polyclonal Antibody

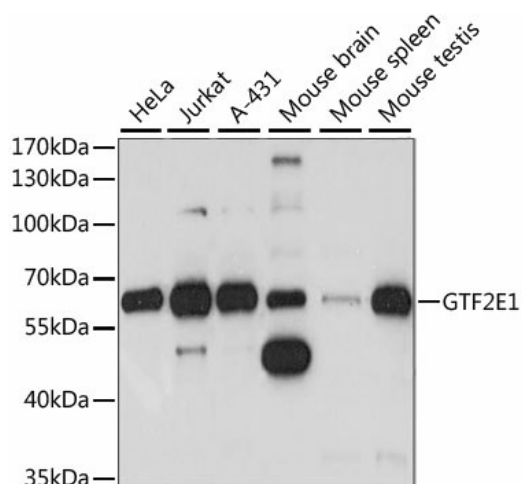
#### Product data:

Product Type:	Primary Antibodies
Applications:	ICC/IF, WB
Recommended Dilution:	WB,1:200 - 1:2000 IHC,1:50 - 1:200 IF,1:50 - 1:200
Reactivity:	Human, Mouse, Rat
Modifications:	Unmodified
Host:	Rabbit
Isotype:	IgG
Clonality:	Polyclonal
Immunogen:	Recombinant fusion protein containing a sequence corresponding to amino acids 230-439 of human GTF2E1 (NP_005504.2).
Formulation:	Buffer: PBS with 0.02% sodium azide,50% glycerol,pH7.3.
Concentration:	lot specific
Purification:	Affinity purification
Conjugation:	Unconjugated
Storage:	Store at -20°C. Avoid freeze / thaw cycles.
Stability:	Shelf life: one year from despatch.
Predicted Protein Size:	49kDa
Gene Name:	general transcription factor IIE subunit 1
Database Link:	<a href="#">Entrez Gene 2960 Human P29083</a>
Background:	Recruits TFIIH to the initiation complex and stimulates the RNA polymerase II C-terminal domain kinase and DNA-dependent ATPase activities of TFIIH. Both TFIIH and TFIIIE are required for promoter clearance by RNA polymerase.
Synonyms:	FE; TF2E1; TFIIIE-A; TFIIIE-alpha

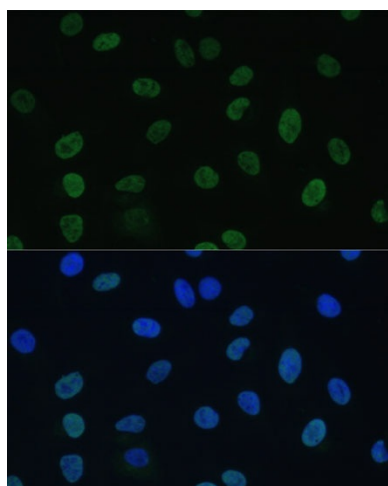


[View online »](#)

## Product images:



Western blot analysis of extracts of various cell lines, using GTF2E1 antibody (TA376847) at 1:1000 dilution. | Secondary antibody: HRP Goat Anti-Rabbit IgG (H+L) at 1:10000 dilution. | Lysates/proteins: 25ug per lane. | Blocking buffer: 3% nonfat dry milk in TBST. | Detection: ECL Basic Kit . | Exposure time: 5S.



Immunofluorescence analysis of U-2 OS cells using GTF2E1 Polyclonal Antibody (TA376847) at dilution of 1:100 (40x lens). Blue: DAPI for nuclear staining.