

Product datasheet for **TA376844S**

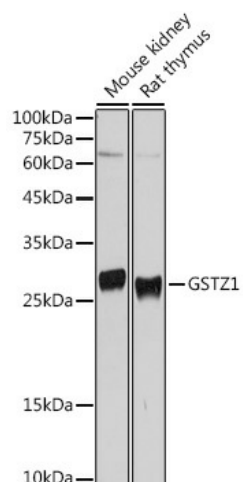
Glutathione Transferase zeta 1 (GSTZ1) Rabbit Polyclonal Antibody

Product data:

Product Type:	Primary Antibodies
Applications:	ELISA, WB
Recommended Dilution:	WB, 1:500 - 1:1000 ELISA, Recommended starting concentration is 1 µg/mL. Please optimize the concentration based on your specific assay requirements.
Reactivity:	Mouse, Rat
Modifications:	Unmodified
Host:	Rabbit
Isotype:	IgG
Clonality:	Polyclonal
Formulation:	Buffer: PBS with 0.02% sodium azide, 50% glycerol, pH 7.3.
Concentration:	lot specific
Purification:	Affinity purification
Conjugation:	Unconjugated
Storage:	Store at -20°C. Avoid freeze / thaw cycles.
Stability:	Shelf life: one year from despatch.
Predicted Protein Size:	24kDa
Gene Name:	glutathione S-transferase zeta 1
Database Link:	O43708
Background:	This gene is a member of the glutathione S-transferase (GSTs) super-family which encodes multifunctional enzymes important in the detoxification of electrophilic molecules, including carcinogens, mutagens, and several therapeutic drugs, by conjugation with glutathione. This enzyme catalyzes the conversion of maleylacetoacetate to fumarylacetoacetate, which is one of the steps in the phenylalanine/tyrosine degradation pathway. Deficiency of a similar gene in mouse causes oxidative stress. Several transcript variants of this gene encode multiple protein isoforms.
Synonyms:	GSTZ1-1; MAAI; MAI; MGC2029



[View online »](#)

Product images:


Western blot analysis of various lysates using GSTZ1 Rabbit pAb ([TA376844]) at 1:500 dilution. Secondary antibody: HRP-conjugated Goat anti-Rabbit IgG (H+L) (AS014) at 1:10000 dilution. Lysates/proteins: 25µg per lane. Blocking buffer: 3% nonfat dry milk in TBST. Detection: ECL Basic Kit (RM00020). Exposure time: 10s.