

Product datasheet for **TA376829**

Glutathione Synthetase (GSS) Rabbit Polyclonal Antibody

Product data:

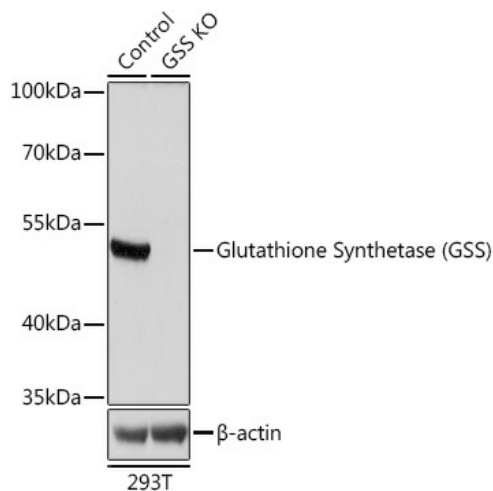
Product Type:	Primary Antibodies
Applications:	ICC/IF, WB
Recommended Dilution:	WB,1:500 - 1:2000 IF,1:50 - 1:200
Reactivity:	Human, Mouse, Rat
Modifications:	Unmodified
Host:	Rabbit
Isotype:	IgG
Clonality:	Polyclonal
Immunogen:	Recombinant fusion protein containing a sequence corresponding to amino acids 373-474 of human Glutathione Synthetase (Glutathione Synthetase (GSS)) (NP_000169.1).
Formulation:	Buffer: PBS with 0.02% sodium azide,50% glycerol,pH7.3.
Concentration:	lot specific
Purification:	Affinity purification
Conjugation:	Unconjugated
Storage:	Store at -20°C. Avoid freeze / thaw cycles.
Stability:	Shelf life: one year from despatch.
Predicted Protein Size:	40kDa/52kDa
Gene Name:	glutathione synthetase
Database Link:	Entrez Gene 2937 Human P48637
Background:	Glutathione is important for a variety of biological functions, including protection of cells from oxidative damage by free radicals, detoxification of xenobiotics, and membrane transport. The protein encoded by this gene functions as a homodimer to catalyze the second step of glutathione biosynthesis, which is the ATP-dependent conversion of gamma-L-glutamyl-L-cysteine to glutathione. Defects in this gene are a cause of glutathione synthetase deficiency.



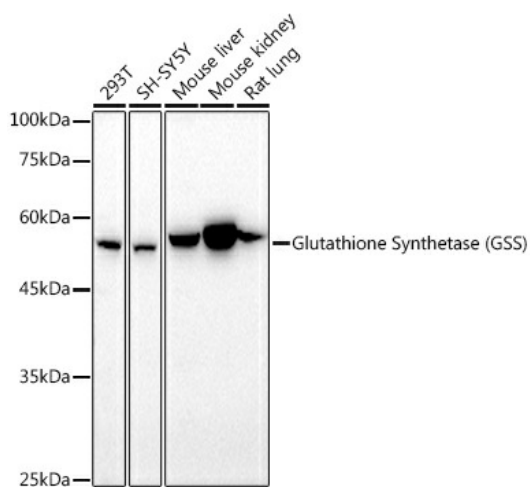
[View online »](#)

Synonyms: GSH-S; GSHS; MGC14098

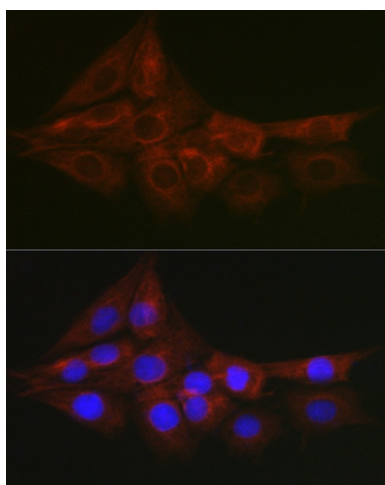
Product images:



Western blot analysis of extracts from normal (control) and Glutathione Synthetase (Glutathione Synthetase (GSS)) knockout (KO) 293T cells, using Glutathione Synthetase (Glutathione Synthetase (GSS)) antibody (TA376829) at 1:1000 dilution. | Secondary antibody: HRP Goat Anti-Rabbit IgG (H+L) at 1:10000 dilution. | Lysates/proteins: 25ug per lane. | Blocking buffer: 3% nonfat dry milk in TBST. | Detection: ECL Basic Kit . | Exposure time: 5s.



Western blot analysis of extracts of various cell lines, using Glutathione Synthetase (GSS) antibody (TA376829) at 1:1000 dilution. | Secondary antibody: HRP Goat Anti-Rabbit IgG (H+L) at 1:10000 dilution. | Lysates/proteins: 25ug per lane. | Blocking buffer: 3% nonfat dry milk in TBST. | Detection: ECL Basic Kit . | Exposure time: 60s.



Immunofluorescence analysis of PC-12 cells using Glutathione Synthetase (GSS) antibody (TA376829) at dilution of 1:150. Blue: DAPI for nuclear staining.