

## Product datasheet for **TA376826**

### GSPT1 Rabbit Polyclonal Antibody

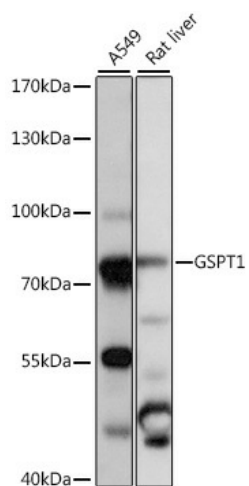
#### Product data:

|                         |   |
|-------------------------|---|
| Product Type:           | Primary Antibodies  |
| Applications:           | WB  |
| Recommended Dilution:   | WB,1:500 - 1:2000   |
| Reactivity:             | Human, Mouse, Rat   |
| Host:                   | Rabbit  |
| Isotype:                | IgG   |
| Clonality:              | Polyclonal  |
| Immunogen:              | Recombinant fusion protein containing a sequence corresponding to amino acids 138-420 of human GSPT1 (NP_001123478.1).  |
| Formulation:            | Buffer: PBS with 0.02% sodium azide,50% glycerol,pH7.3.   |
| Concentration:          | lot specific  |
| Purification:           | Affinity purification   |
| Conjugation:            | Unconjugated  |
| Storage:                | Store at -20°C. Avoid freeze / thaw cycles.   |
| Stability:              | Shelf life: one year from despatch.   |
| Predicted Protein Size: | 55kDa/68kDa   |
| Gene Name:              | G1 to S phase transition 1  |
| Database Link:          | <a href="#">Entrez Gene 2935 Human P15170</a>   |
| Background:             | Involved in translation termination in response to the termination codons UAA, UAG and UGA (By similarity. Stimulates the activity of ETF1 (By similarity. Involved in regulation of mammalian cell growth. Component of the transient SURF complex which recruits UPF1 to stalled ribosomes in the context of nonsense-mediated decay (NMD of mRNAs containing premature stop codons. Required for SHFL-mediated translation termination which inhibits programmed ribosomal frameshifting (-1PRF of mRNA from viruses and cellular genes. |
| Synonyms:               | 551G9.2; eRF3a; ETF3A; FLJ38048; FLJ39067; GST1   |



[View online »](#)

## Product images:



Western blot analysis of extracts of various cell lines, using GSPT1 antibody (TA376826) at 1:1000 dilution. | Secondary antibody: HRP Goat Anti-Rabbit IgG (H+L) at 1:10000 dilution. | Lysates/proteins: 25ug per lane. | Blocking buffer: 3% nonfat dry milk in TBST. | Detection: ECL Basic Kit . | Exposure time: 1s.