

Product datasheet for **TA376821S**

GSK3 beta (GSK3B) Rabbit Polyclonal Antibody

Product data:

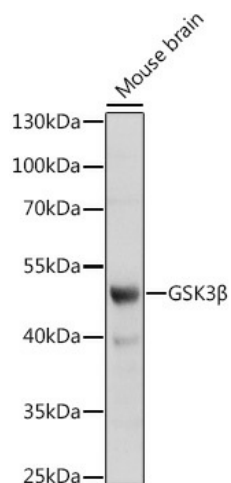
Product Type:	Primary Antibodies
Applications:	ELISA, ICC/IF, IHC, IP, WB
Recommended Dilution:	WB, 1:500 - 1:2000 IHC-P, 1:50 - 1:200 IF/ICC, 1:50 - 1:200 IP, 0.5µg-4µg antibody for 200µg-400µg extracts of whole cells ELISA, Recommended starting concentration is 1 µg/mL. Please optimize the concentration based on your specific assay requirements.
Reactivity:	Human, Mouse, Rat
Modifications:	Unmodified
Host:	Rabbit
Isotype:	IgG
Clonality:	Polyclonal
Formulation:	Buffer: PBS with 0.02% sodium azide, 50% glycerol, pH 7.3.
Concentration:	lot specific
Purification:	Affinity purification
Conjugation:	Unconjugated
Storage:	Store at -20°C. Avoid freeze / thaw cycles.
Stability:	Shelf life: one year from despatch.
Predicted Protein Size:	47kDa
Gene Name:	glycogen synthase kinase 3 beta
Database Link:	Entrez Gene 2932 Human P49841
Background:	The protein encoded by this gene is a serine-threonine kinase belonging to the glycogen synthase kinase subfamily. It is a negative regulator of glucose homeostasis and is involved in energy metabolism, inflammation, ER-stress, mitochondrial dysfunction, and apoptotic pathways. Defects in this gene have been associated with Parkinson disease and Alzheimer disease.



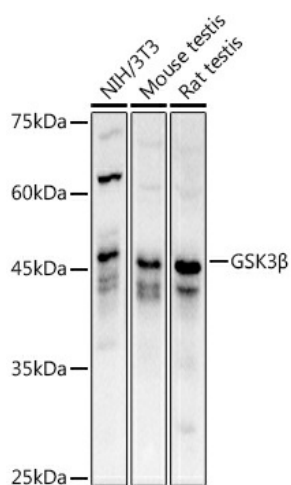
[View online »](#)

Synonyms: GSK3B

Product images:



Western blot analysis of lysates from mouse brain



Western blot analysis of various lysates using GSK3β Rabbit pAb (TA376821) at 1:1000 dilution.

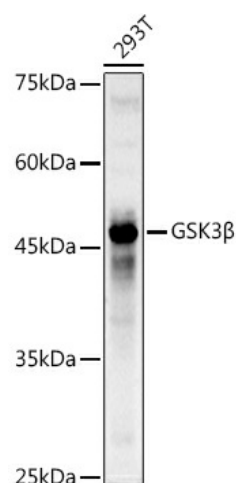
Secondary antibody: HRP-conjugated Goat anti-Rabbit IgG (H+L) (AS014) at 1:10000 dilution.

Lysates/proteins: 25μg per lane.

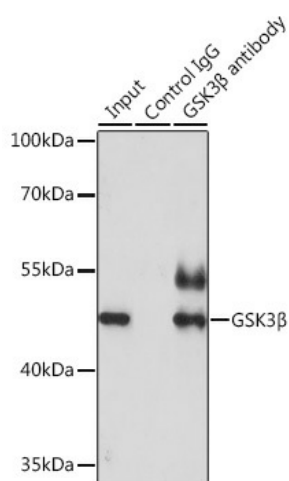
Blocking buffer: 3% nonfat dry milk in TBST.

Detection: ECL Basic Kit (RM00020).

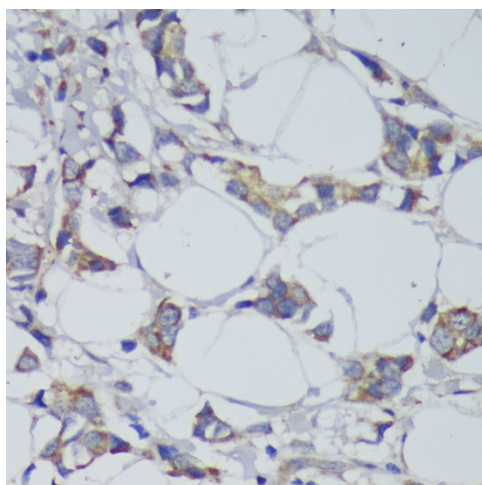
Exposure time: 3s.



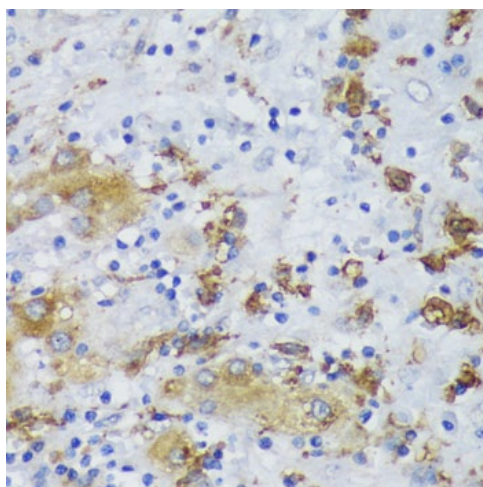
Western blot analysis of lysates from 293T cells



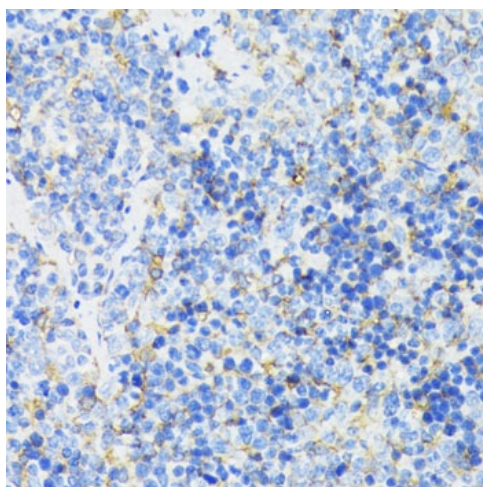
Immunoprecipitation analysis of 200 μ g extracts of HeLa cells using 3 μ g GSK3 β antibody ([TA376821]). Western blot was performed from the immunoprecipitate using GSK3 β antibody ([TA376821]) at a dilution of 1:1000.



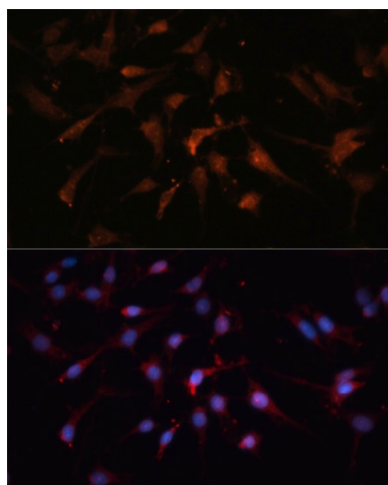
Immunohistochemistry analysis of paraffin-embedded Human mammary cancer using GSK3 β Rabbit pAb ([TA376821]) at dilution of 1:200 (40x lens). Microwave antigen retrieval performed with 0.01M PBS Buffer (pH 7.2) prior to IHC staining.



Immunohistochemistry analysis of paraffin-embedded Human liver cancer using GSK3 β Rabbit pAb ([TA376821]) at dilution of 1:200 (40x lens). Microwave antigen retrieval performed with 0.01M PBS Buffer (pH 7.2) prior to IHC staining.



Immunohistochemistry analysis of paraffin-embedded Mouse spleen using GSK3 β Rabbit pAb ([TA376821]) at dilution of 1:200 (40x lens). Microwave antigen retrieval performed with 0.01M PBS Buffer (pH 7.2) prior to IHC staining.



Immunofluorescence analysis of C6 cells using GSK3 β Rabbit pAb ([TA376821]) at dilution of 1:100. Blue: DAPI for nuclear staining.