

## Product datasheet for **TA376811**

### Gasdermin D (GSDMD) Rabbit Polyclonal Antibody

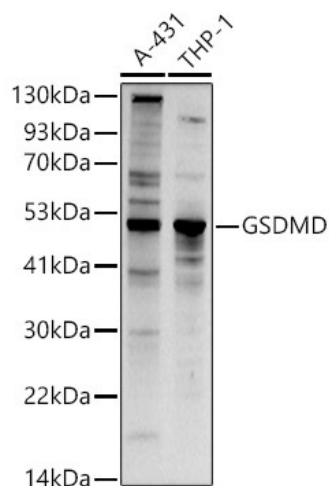
#### Product data:

Product Type:	Primary Antibodies
Applications:	ICC/IF, WB
Recommended Dilution:	WB, 1:500 - 1:2000 IF, 1:50 - 1:200
Reactivity:	Human, Mouse, Rat
Modifications:	Unmodified
Host:	Rabbit
Isotype:	IgG
Clonality:	Polyclonal
Immunogen:	Recombinant fusion protein containing a sequence corresponding to amino acids 276-484 of human GSDMD (NP_079012.3).
Formulation:	Buffer: PBS with 0.02% sodium azide, 50% glycerol, pH 7.3.
Concentration:	lot specific
Purification:	Affinity purification
Conjugation:	Unconjugated
Storage:	Store at -20°C. Avoid freeze / thaw cycles.
Stability:	Shelf life: one year from despatch.
Predicted Protein Size:	53kDa
Gene Name:	gasdermin D
Database Link:	<a href="#">Entrez Gene 79792 Human P57764</a>
Background:	Gasdermin D is a member of the gasdermin family. Members of this family appear to play a role in regulation of epithelial proliferation. Gasdermin D has been suggested to act as a tumor suppressor. Alternatively spliced transcript variants have been described.
Synonyms:	DF5L; DFNA5L; FKSG10; FLJ12150; GSDMDC1

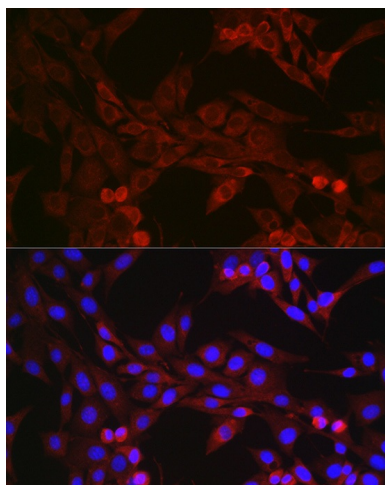


[View online »](#)

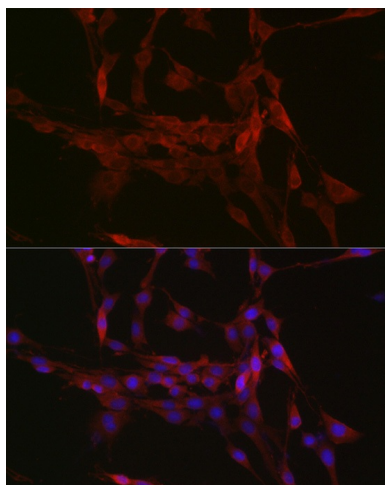
## Product images:



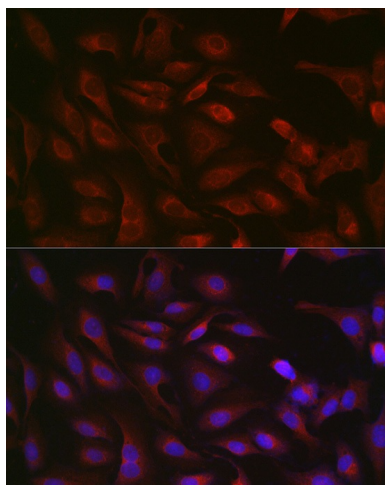
Western blot analysis of extracts of various cell lines, using GSDMD (Full Length+C terminal) antibody (TA376811) at 1:1000 dilution. | Secondary antibody: HRP Goat Anti-Rabbit IgG (H+L) at 1:10000 dilution. | Lysates/proteins: 25ug per lane. | Blocking buffer: 3% nonfat dry milk in TBST. | Detection: ECL Basic Kit . | Exposure time: 90s.



Immunofluorescence analysis of NIH/3T3 cells using GSDMD (Full Length+C terminal) Rabbit pAb (TA376811) at dilution of 1:250 (40x lens). Blue: DAPI for nuclear staining.



Immunofluorescence analysis of PC-12 cells using GSDMD (Full Length+C terminal) Rabbit pAb (TA376811) at dilution of 1:250 (40x lens). Blue: DAPI for nuclear staining.



Immunofluorescence analysis of U2OS cells using GSDMD (Full Length+C terminal) Rabbit pAb (TA376811) at dilution of 1:250 (40x lens). Blue: DAPI for nuclear staining.