

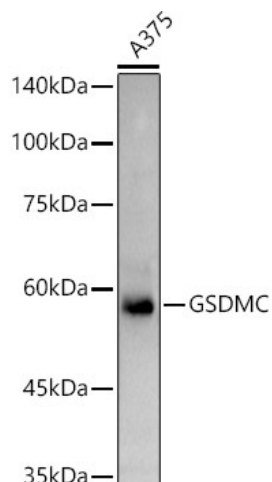
## Product datasheet for TA376810

### GSDMC Rabbit Polyclonal Antibody

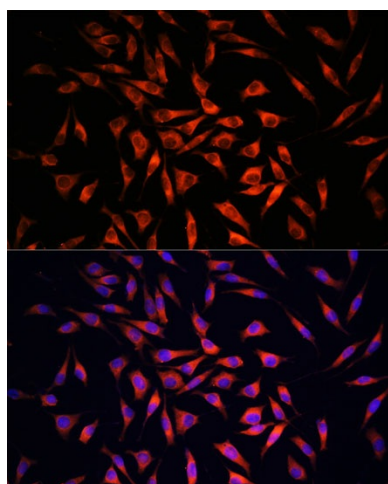
#### Product data:

Product Type:	Primary Antibodies
Applications:	ELISA, ICC/IF, WB
Recommended Dilution:	WB, 1:100 - 1:500 IF/ICC, 1:50 - 1:200 ELISA, Recommended starting concentration is 1 µg/mL. Please optimize the concentration based on your specific assay requirements.
Reactivity:	Human, Mouse
Modifications:	Unmodified
Host:	Rabbit
Isotype:	IgG
Clonality:	Polyclonal
Formulation:	Buffer: PBS with 0.09% Sodium azide, 50% glycerol, pH 7.3.
Concentration:	lot specific
Purification:	Affinity purification
Conjugation:	Unconjugated
Storage:	Store at -20°C. Avoid freeze / thaw cycles.
Stability:	Shelf life: one year from despatch.
Predicted Protein Size:	58kDa
Gene Name:	gasdermin C
Database Link:	<a href="#">Entrez Gene 56169 Human Q9BYG8</a>
Background:	Predicted to enable phosphatidylinositol-4,5-bisphosphate binding activity; phosphatidylinositol-4-phosphate binding activity; and phosphatidylserine binding activity. Predicted to be involved in defense response to bacterium and pyroptosis. Predicted to act upstream of or within intestinal epithelial cell development. Located in cytoplasm.
Synonyms:	MLZE


[View online »](#)

**Product images:**


Western blot analysis of various lysates



Immunofluorescence analysis of L929 cells using GSDMC Rabbit pAb (TA376810) at dilution of 1:100. Secondary antibody: Cy3-conjugated Goat anti-Rabbit IgG (H+L) (AS007) at 1:500 dilution. Blue: DAPI for nuclear staining.