

Product datasheet for **TA376792S**

GRINA Rabbit Polyclonal Antibody

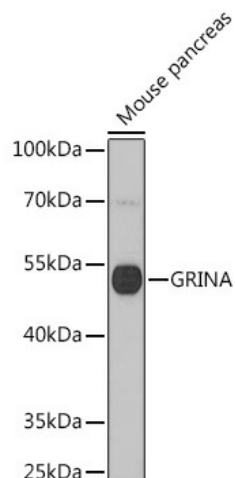
Product data:

Product Type:	Primary Antibodies
Applications:	ELISA, WB
Recommended Dilution:	WB, 1:500 - 1:2000 ELISA, Recommended starting concentration is 1 µg/mL. Please optimize the concentration based on your specific assay requirements.
Reactivity:	Human, Mouse, Rat
Modifications:	Unmodified
Host:	Rabbit
Isotype:	IgG
Clonality:	Polyclonal
Formulation:	Buffer: PBS with 0.02% sodium azide, 50% glycerol, pH 7.3.
Concentration:	lot specific
Purification:	Affinity purification
Conjugation:	Unconjugated
Storage:	Store at -20°C. Avoid freeze / thaw cycles.
Stability:	Shelf life: one year from despatch.
Predicted Protein Size:	41kDa
Gene Name:	glutamate ionotropic receptor NMDA type subunit associated protein 1
Database Link:	Entrez Gene 2907 Human Q7Z429
Background:	Predicted to enable transmembrane transporter binding activity. Predicted to act upstream of or within endoplasmic reticulum calcium ion homeostasis and negative regulation of endoplasmic reticulum stress-induced intrinsic apoptotic signaling pathway. Predicted to be located in Golgi apparatus and endoplasmic reticulum. Predicted to be integral component of membrane.
Synonyms:	HNRGW; MGC99687; NMDARA1; TMBIM3



[View online »](#)

Product images:



Western blot analysis of lysates from Mouse pancreas