

## Product datasheet for **TA376782**

### **NMDAR1 (GRIN1) Rabbit Polyclonal Antibody**

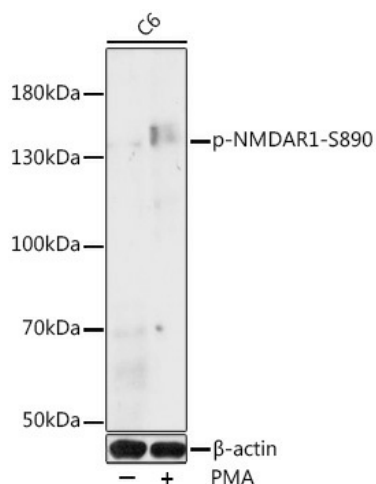
#### **Product data:**

<b>Product Type:</b>	Primary Antibodies
<b>Applications:</b>	WB
<b>Recommended Dilution:</b>	WB,1:500 - 1:2000
<b>Reactivity:</b>	Human, Rat
<b>Modifications:</b>	Phospho S890
<b>Host:</b>	Rabbit
<b>Isotype:</b>	IgG
<b>Clonality:</b>	Polyclonal
<b>Immunogen:</b>	A phospho specific peptide corresponding to residues surrounding S890 of human NMDAR1
<b>Formulation:</b>	Buffer: PBS with 0.02% sodium azide,50% glycerol,pH7.3.
<b>Concentration:</b>	lot specific
<b>Purification:</b>	Affinity purification
<b>Conjugation:</b>	Unconjugated
<b>Storage:</b>	Store at -20°C. Avoid freeze / thaw cycles.
<b>Stability:</b>	Shelf life: one year from despatch.
<b>Predicted Protein Size:</b>	99kDa/101kDa/103kDa/105kDa/106kDa/107kDa
<b>Gene Name:</b>	glutamate ionotropic receptor NMDA type subunit 1
<b>Database Link:</b>	<a href="#">Entrez Gene 2902 Human Q05586</a>
<b>Background:</b>	The protein encoded by this gene is a critical subunit of N-methyl-D-aspartate receptors, members of the glutamate receptor channel superfamily which are heteromeric protein complexes with multiple subunits arranged to form a ligand-gated ion channel. These subunits play a key role in the plasticity of synapses, which is believed to underlie memory and learning. Cell-specific factors are thought to control expression of different isoforms, possibly contributing to the functional diversity of the subunits. Alternatively spliced transcript variants have been described.
<b>Synonyms:</b>	NMDA1; NMDAR1; NR1



[View online »](#)

## Product images:



Western blot analysis of extracts of C6 cells, using Phospho-NMDAR1-S890 antibody (TA376782) at 1:1000 dilution. C6 cells were treated by PMA/TPA (200nM) for 30 minutes after serum-starvation overnight. | Secondary antibody: HRP Goat Anti-Rabbit IgG (H+L) at 1:10000 dilution. | Lysates/proteins: 25ug per lane. | Blocking buffer: 3% BSA. | Detection: ECL Basic Kit . | Exposure time: 90s.