

Product datasheet for **TA376772**

GRIA1 Rabbit Polyclonal Antibody

Product data:

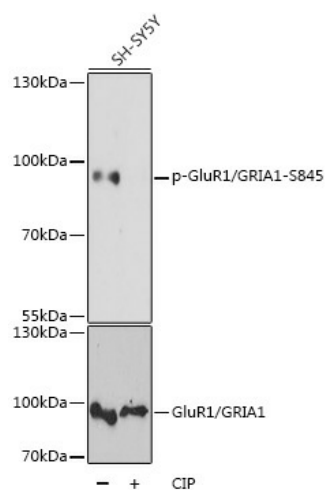
Product Type:	Primary Antibodies
Applications:	WB
Recommended Dilution:	WB,1:500 - 1:2000
Reactivity:	Human, Mouse, Rat
Modifications:	Phospho S845
Host:	Rabbit
Isotype:	IgG
Clonality:	Polyclonal
Immunogen:	A phospho specific peptide corresponding to residues surrounding S845 of human GluR1/GRIA1
Formulation:	Buffer: PBS with 0.02% sodium azide,50% glycerol,pH7.3.
Concentration:	lot specific
Purification:	Affinity purification
Conjugation:	Unconjugated
Storage:	Store at -20°C. Avoid freeze / thaw cycles.
Stability:	Shelf life: one year from despatch.
Predicted Protein Size:	92kDa/93kDa/101kDa/102kDa
Gene Name:	glutamate ionotropic receptor AMPA type subunit 1
Database Link:	Entrez Gene 2890 Human P42261
Background:	Glutamate receptors are the predominant excitatory neurotransmitter receptors in the mammalian brain and are activated in a variety of normal neurophysiologic processes. These receptors are heteromeric protein complexes with multiple subunits, each possessing transmembrane regions, and all arranged to form a ligand-gated ion channel. The classification of glutamate receptors is based on their activation by different pharmacologic agonists. This gene belongs to a family of alpha-amino-3-hydroxy-5-methyl-4-isoxazole propionate (AMPA) receptors. Alternatively spliced transcript variants encoding different isoforms have been found for this gene.



[View online »](#)

Synonyms: GluA1; GLUH1; GluR-A; gluR-A; GLUR1; GLURA; GluRA; HBGR1; HIPA1

Product images:



Western blot analysis of extracts of SH-SY5Y cells, using Phospho-GluR1/GRIA1-S845 antibody (TA376772) at 1:1000 dilution or GluR1/GRIA1 antibody (A1826). SH-SY5Y cells were treated by CIP(20uL/400ul) at 37°C for 1 hour. | Secondary antibody: HRP Goat Anti-Rabbit IgG (H+L) at 1:10000 dilution. | Lysates/proteins: 25ug per lane. | Blocking buffer: 3% BSA. | Detection: ECL Basic Kit . | Exposure time: 15s.