

Product datasheet for **TA376758S**

Glutathione Peroxidase 1 (GPX1) Rabbit Polyclonal Antibody

Product data:

Product Type:	Primary Antibodies
Applications:	ICC/IF, IHC, WB
Recommended Dilution:	WB,1:500 - 1:2000 IHC,1:50 - 1:200 IF,1:50 - 1:200
Reactivity:	Human, Mouse, Rat
Modifications:	Unmodified
Host:	Rabbit
Isotype:	IgG
Clonality:	Polyclonal
Immunogen:	Recombinant fusion protein containing a sequence corresponding to amino acids 50-203 of human GPX1 (NP_000572.2).
Formulation:	PBS with 0.09% Sodium azide,50% glycerol,pH7.3.
Concentration:	lot specific
Purification:	Affinity purification
Conjugation:	Unconjugated
Storage:	Store at -20°C. Avoid freeze / thaw cycles.
Stability:	Shelf life: one year from despatch.
Predicted Protein Size:	10kDa/22kDa
Gene Name:	glutathione peroxidase 1
Database Link:	Entrez Gene 2876 Human P07203



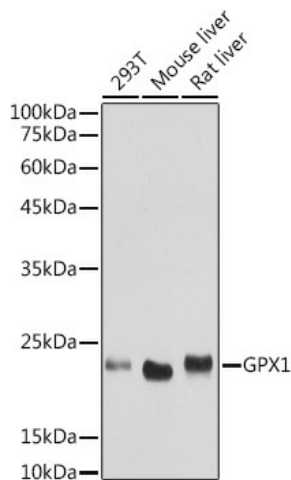
[View online »](#)

Background:

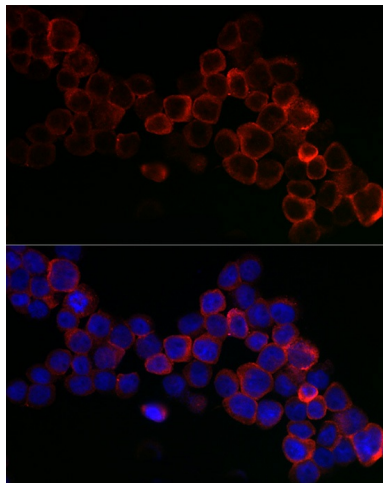
This gene encodes a member of the glutathione peroxidase family. Glutathione peroxidase functions in the detoxification of hydrogen peroxide, and is one of the most important antioxidant enzymes in humans. This protein is one of only a few proteins known in higher vertebrates to contain selenocysteine, which occurs at the active site of glutathione peroxidase and is coded by UGA, that normally functions as a translation termination codon. In addition, this protein is characterized in a polyalanine sequence polymorphism in the N-terminal region, which includes three alleles with five, six or seven alanine (ALA) repeats in this sequence. The allele with five ALA repeats is significantly associated with breast cancer risk. Two alternatively spliced transcript variants encoding distinct isoforms have been found for this gene.

Synonyms:

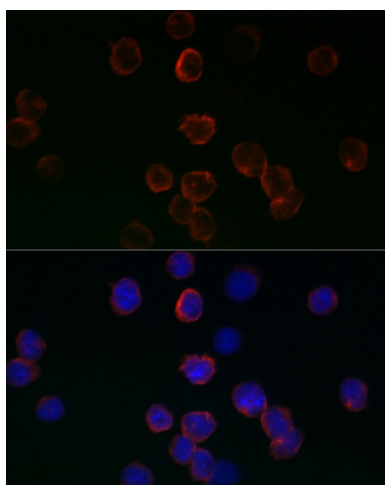
GPXD; GSHPX1

Product images:


Western blot analysis of extracts of various cell lines, using GPX1 antibody ([TA376758]) at 1:1000 dilution. | Secondary antibody: HRP Goat Anti-Rabbit IgG (H+L) at 1:10000 dilution. | Lysates/proteins: 25ug per lane. | Blocking buffer: 3% nonfat dry milk in TBST. | Detection: ECL Basic Kit . | Exposure time: 5s.



Immunofluorescence analysis of THP-1 cells using GPX1 antibody ([TA376758]) at dilution of 1:200. Blue: DAPI for nuclear staining.



Immunofluorescence analysis of 293T cells using GPX1 antibody ([TA376758]) at dilution of 1:200. Blue: DAPI for nuclear staining.