

## Product datasheet for **TA376743S**

### GPR62 Rabbit Polyclonal Antibody

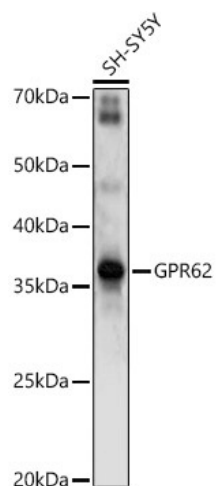
#### Product data:

Product Type:	Primary Antibodies
Applications:	ELISA, WB
Recommended Dilution:	WB, 1:500 - 1:1000 ELISA, Recommended starting concentration is 1 µg/mL. Please optimize the concentration based on your specific assay requirements.
Reactivity:	Human, Mouse, Rat
Modifications:	Unmodified
Host:	Rabbit
Isotype:	IgG
Clonality:	Polyclonal
Formulation:	Buffer: PBS with 0.02% sodium azide, 50% glycerol, pH 7.3.
Concentration:	lot specific
Purification:	Affinity purification
Conjugation:	Unconjugated
Storage:	Store at -20°C. Avoid freeze / thaw cycles.
Stability:	Shelf life: one year from despatch.
Predicted Protein Size:	38kDa
Gene Name:	G protein-coupled receptor 62
Database Link:	<a href="#">Entrez Gene 118442 Human Q9BZJ7</a>
Background:	Enables arrestin family protein binding activity. Involved in G protein-coupled receptor signaling pathway; inositol phosphate-mediated signaling; and positive regulation of cAMP-mediated signaling. Located in endosome and plasma membrane. Part of receptor complex.
Synonyms:	GPCR8; KPG_005; MGC26943



[View online »](#)

## Product images:



Western blot analysis of lysates from SH-SY5Y cells