

Product datasheet for **TA376743**

GPR62 Rabbit Polyclonal Antibody

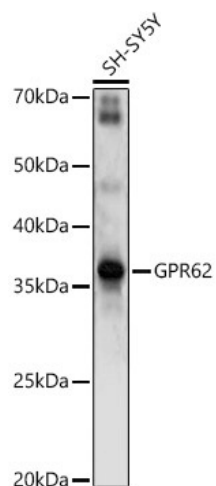
Product data:

Product Type:	Primary Antibodies
Applications:	WB
Recommended Dilution:	WB,1:500 - 1:2000
Reactivity:	Human, Mouse, Rat
Modifications:	Unmodified
Host:	Rabbit
Isotype:	IgG
Clonality:	Polyclonal
Immunogen:	A synthetic peptide corresponding to a sequence within amino acids 150-250 of human GPR62 (NP_543141.3).
Formulation:	Buffer: PBS with 0.02% sodium azide,50% glycerol,pH7.3.
Concentration:	lot specific
Purification:	Affinity purification
Conjugation:	Unconjugated
Storage:	Store at -20°C. Avoid freeze / thaw cycles.
Stability:	Shelf life: one year from despatch.
Predicted Protein Size:	37kDa
Gene Name:	G protein-coupled receptor 62
Database Link:	Entrez Gene 118442 Human Q9BZJ7
Background:	Orphan G-protein coupled receptor. Constitutively activates the G(q/11/inositol phosphate and the G(s-alpha/cAMP signaling pathways. Has spontaneous activity for beta-arrestin recruitment. Shows a reciprocal modulation of signaling functions with the melatonin receptor MTNR1B most likely through receptor heteromerization.
Synonyms:	GPCR8; KPG_005; MGC26943



[View online »](#)

Product images:



Western blot analysis of extracts of SH-SY5Y cells, using GPR62 antibody (TA376743) at 1:1000 dilution. | Secondary antibody: HRP Goat Anti-Rabbit IgG (H+L) at 1:10000 dilution. | Lysates/proteins: 25ug per lane. | Blocking buffer: 3% nonfat dry milk in TBST. | Detection: ECL Enhanced Kit . | Exposure time: 90s.