

Product datasheet for TA376742S

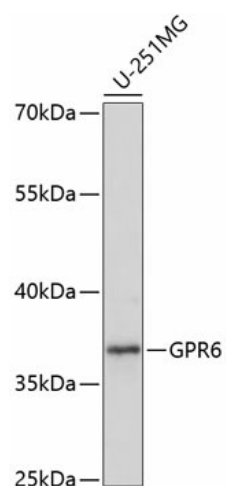
GPR6 Rabbit Polyclonal Antibody

Product data:

Product Type:	Primary Antibodies
Applications:	ELISA, WB
Recommended Dilution:	WB, 1:500 - 1:2000 ELISA, Recommended starting concentration is 1 µg/mL. Please optimize the concentration based on your specific assay requirements.
Reactivity:	Human, Mouse
Modifications:	Unmodified
Host:	Rabbit
Isotype:	IgG
Clonality:	Polyclonal
Formulation:	Buffer: PBS with 0.02% sodium azide, 50% glycerol, pH 7.3.
Concentration:	lot specific
Purification:	Affinity purification
Conjugation:	Unconjugated
Storage:	Store at -20°C. Avoid freeze / thaw cycles.
Stability:	Shelf life: one year from despatch.
Predicted Protein Size:	38kDa
Gene Name:	G protein-coupled receptor 6
Database Link:	Entrez Gene 2830 Human P46095
Background:	Predicted to enable sphingosine-1-phosphate receptor activity. Predicted to be involved in adenylate cyclase-activating G protein-coupled receptor signaling pathway and regulation of metabolic process. Predicted to act upstream of or within positive regulation of cytosolic calcium ion concentration. Predicted to be integral component of plasma membrane. Predicted to be active in cytoplasm and plasma membrane.
Synonyms:	GPR6

[View online »](#)

Product images:



Western blot analysis of lysates from U-251MG cells