

Product datasheet for **TA376742**

GPR6 Rabbit Polyclonal Antibody

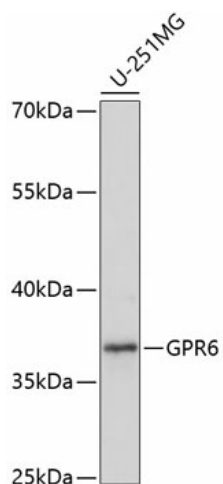
Product data:

Product Type:	Primary Antibodies
Applications:	WB
Recommended Dilution:	WB,1:500 - 1:2000 IF,1:50 - 1:100
Reactivity:	Human, Mouse
Modifications:	Unmodified
Host:	Rabbit
Isotype:	IgG
Clonality:	Polyclonal
Immunogen:	Recombinant fusion protein containing a sequence corresponding to amino acids 253-362 of human GPR6 (NP_005275.1).
Formulation:	Buffer: PBS with 0.02% sodium azide,50% glycerol,pH7.3.
Concentration:	lot specific
Purification:	Affinity purification
Conjugation:	Unconjugated
Storage:	Store at -20°C. Avoid freeze / thaw cycles.
Stability:	Shelf life: one year from despatch.
Predicted Protein Size:	37kDa/39kDa
Gene Name:	G protein-coupled receptor 6
Database Link:	Entrez Gene 2830 Human P46095
Background:	Orphan receptor with constitutive G(s) signaling activity that activate cyclic AMP. Promotes neurite outgrowth and blocks myelin inhibition in neurons (By similarity).
Synonyms:	GPR6



[View online »](#)

Product images:



Western blot analysis of extracts of U-251MG cells, using GPR6 antibody (TA376742) at 1:1000 dilution. | Secondary antibody: HRP Goat Anti-Rabbit IgG (H+L) at 1:10000 dilution. | Lysates/proteins: 25ug per lane. | Blocking buffer: 3% nonfat dry milk in TBST. | Detection: ECL Basic Kit . | Exposure time: 10s.