

Product datasheet for **TA376739**

GPR45 Rabbit Polyclonal Antibody

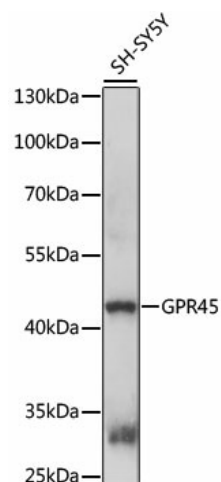
Product data:

Product Type:	Primary Antibodies
Applications:	WB
Recommended Dilution:	WB,1:500 - 1:2000
Reactivity:	Human
Modifications:	Unmodified
Host:	Rabbit
Isotype:	IgG
Clonality:	Polyclonal
Immunogen:	A synthetic peptide corresponding to a sequence within amino acids 150-250 of human GPR45 (NP_009158.3).
Formulation:	Buffer: PBS with 0.02% sodium azide,50% glycerol,pH7.3.
Concentration:	lot specific
Purification:	Affinity purification
Conjugation:	Unconjugated
Storage:	Store at -20°C. Avoid freeze / thaw cycles.
Stability:	Shelf life: one year from despatch.
Predicted Protein Size:	41kDa
Gene Name:	G protein-coupled receptor 45
Database Link:	Entrez Gene 11250 Human Q9Y5Y3
Background:	This intronless gene encodes a member of the G protein-coupled receptor (GPCR) family. Members of this protein family contain seven putative transmembrane domains and may mediate signaling processes to the interior of the cell via activation of heterotrimeric G proteins. This protein may function in the central nervous system.
Synonyms:	PSP24; PSP24(ALPHA); PSP24A



[View online »](#)

Product images:



Western blot analysis of extracts of SH-SY5Y cells, using GPR45 antibody (TA376739) at 1:1000 dilution. | Secondary antibody: HRP Goat Anti-Rabbit IgG (H+L) at 1:10000 dilution. | Lysates/proteins: 25ug per lane. | Blocking buffer: 3% nonfat dry milk in TBST. | Detection: ECL Basic Kit . | Exposure time: 5s.