

## Product datasheet for **TA376736**

### GPR32 Rabbit Polyclonal Antibody

#### Product data:

**Product Type:** Primary Antibodies

**Applications:** WB

**Recommended Dilution:** WB, 1:500 - 1:2000

**Dilution:** IHC, 1:100 - 1:200

**Reactivity:** Human, Mouse, Rat

**Modifications:** Unmodified

**Host:** Rabbit

**Isotype:** IgG

**Clonality:** Polyclonal

**Immunogen:** A synthetic peptide corresponding to a sequence within amino acids 1-100 of human GPR32 (NP\_001497.1): MNGVSEGTRGCSDRQPGVLTRDRCSRKMNSSGCLSEEVGLRPLTVVILSASIVVGLGNGLVLWMTVFRMARTVSTVCFHLL

**Formulation:** Buffer: PBS with 0.02% sodium azide, 50% glycerol, pH 7.3.

**Concentration:** lot specific

**Purification:** Affinity purification

**Conjugation:** Unconjugated

**Storage:** Store at -20°C. Avoid freeze / thaw cycles.

**Stability:** Shelf life: one year from despatch.

**Predicted Protein Size:** 40kDa

**Gene Name:** G protein-coupled receptor 32

**Database Link:** [Entrez Gene 2854 Human O75388](#)

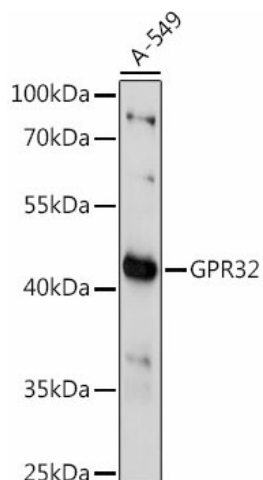
**Background:** This gene is intronless and encodes a member of the G-protein coupled receptor 1 family. The encoded protein and lipoxin A4 and has been linked to pulmonary inflammation. A related pseudogene has been identified on ch

**Synonyms:** RVDR1



[View online »](#)

## Product images:



Western blot analysis of extracts of A-549 cells, using GPR32 antibody (TA376736) at 1:1000 dilution. | Secondary antibody: HRP Goat Anti-Rabbit IgG (H+L) at 1:10000 dilution. | Lysates/proteins: 25ug per lane. | Blocking buffer: 3% nonfat dry milk in TBST. | Detection: ECL Basic Kit . | Exposure time: 90s.