

Product datasheet for **TA376735**

GPR22 Rabbit Polyclonal Antibody

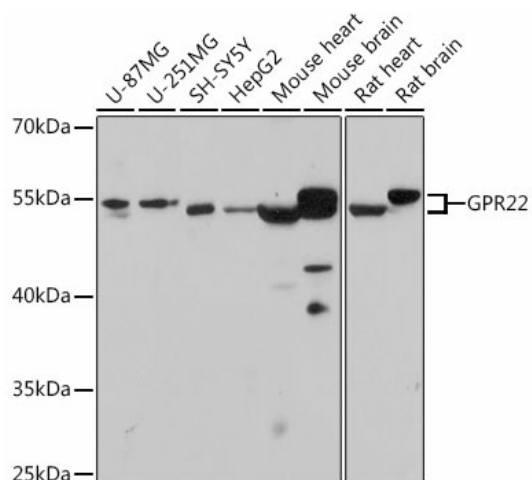
Product data:

Product Type:	Primary Antibodies
Applications:	ICC/IF, WB
Recommended Dilution:	WB,1:500 - 1:2000 IF,1:50 - 1:200
Reactivity:	Human, Mouse, Rat
Host:	Rabbit
Isotype:	IgG
Clonality:	Polyclonal
Immunogen:	Recombinant protein of human GPR22.
Formulation:	PBS with 0.05% proclin300,50% glycerol,pH7.3.
Concentration:	lot specific
Purification:	Affinity purification
Conjugation:	Unconjugated
Storage:	Store at -20°C. Avoid freeze / thaw cycles.
Stability:	Shelf life: one year from despatch.
Predicted Protein Size:	49kDa
Gene Name:	G protein-coupled receptor 22
Database Link:	Entrez Gene 2845 Human Q99680
Background:	This gene is a member of the G-protein coupled receptor 1 family and encodes a multi-pass membrane protein.
Synonyms:	2900068K05Rik; AW061316

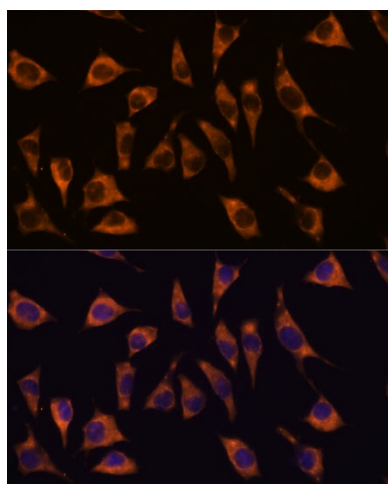


[View online »](#)

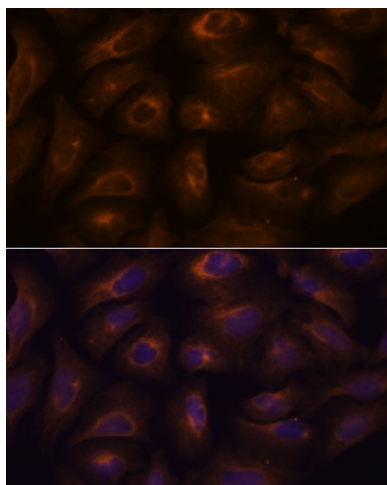
Product images:



Western blot analysis of extracts of various cell lines, using GPR22 antibody (TA376735) at 1:1000 dilution. | Secondary antibody: HRP Goat Anti-Rabbit IgG (H+L) at 1:10000 dilution. | Lysates/proteins: 25ug per lane. | Blocking buffer: 3% nonfat dry milk in TBST. | Detection: ECL Basic Kit. | Exposure time: 90s.



Immunofluorescence analysis of L929 cells using GPR22 antibody (TA376735) at dilution of 1:100. Blue: DAPI for nuclear staining.



Immunofluorescence analysis of U-2 OS cells using GPR22 antibody (TA376735) at dilution of 1:100. Blue: DAPI for nuclear staining.