

Product datasheet for **TA376734**

GPR182 Rabbit Polyclonal Antibody

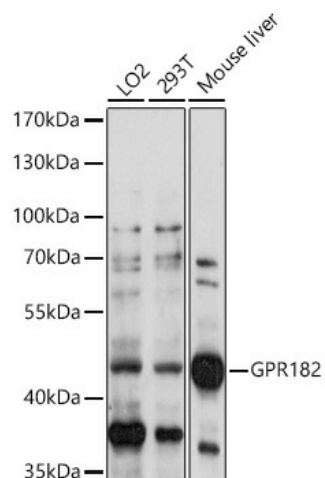
Product data:

Product Type:	Primary Antibodies
Applications:	WB
Recommended Dilution:	WB,1:500 - 1:2000
Reactivity:	Human, Mouse
Modifications:	Unmodified
Host:	Rabbit
Isotype:	IgG
Clonality:	Polyclonal
Immunogen:	A synthetic peptide corresponding to a sequence within amino acids 250-350 of human GPR182 (NP_009195.1).
Formulation:	Buffer: PBS with 0.02% sodium azide,50% glycerol,pH7.3.
Concentration:	lot specific
Purification:	Affinity purification
Conjugation:	Unconjugated
Storage:	Store at -20°C. Avoid freeze / thaw cycles.
Stability:	Shelf life: one year from despatch.
Predicted Protein Size:	45kDa
Gene Name:	G protein-coupled receptor 182
Database Link:	Entrez Gene 11318 Human O15218
Background:	Adrenomedullin is a potent vasodilator peptide that exerts major effects on cardiovascular function. This gene encodes a seven-transmembrane protein that belongs to the family 1 of G-protein coupled receptors. Studies of the rat counterpart suggest that the encoded protein may function as a receptor for adrenomedullin.
Synonyms:	7TMR; ADMR; AM-R; AMR; G10D; gamrh; hrhAMR



[View online »](#)

Product images:



Western blot analysis of extracts of various cell lines, using GPR182 antibody (TA376734) at 1:1000 dilution. | Secondary antibody: HRP Goat Anti-Rabbit IgG (H+L) at 1:10000 dilution. | Lysates/proteins: 25ug per lane. | Blocking buffer: 3% nonfat dry milk in TBST. | Detection: ECL Basic Kit. | Exposure time: 60s.