

Product datasheet for **TA376727S**

GPCR 2037 (GPR151) Rabbit Polyclonal Antibody

Product data:

Product Type:	Primary Antibodies
Applications:	ELISA, WB
Recommended Dilution:	WB, 1:500 - 1:1000 ELISA, Recommended starting concentration is 1 µg/mL. Please optimize the concentration based on your specific assay requirements.
Reactivity:	Human, Mouse, Rat
Modifications:	Unmodified
Host:	Rabbit
Isotype:	IgG
Clonality:	Polyclonal
Formulation:	Buffer: PBS with 0.02% sodium azide, 50% glycerol, pH 7.3.
Concentration:	lot specific
Purification:	Affinity purification
Conjugation:	Unconjugated
Storage:	Store at -20°C. Avoid freeze / thaw cycles.
Stability:	Shelf life: one year from despatch.
Predicted Protein Size:	47kDa
Gene Name:	G protein-coupled receptor 151
Database Link:	Entrez Gene 134391 Human Q8TDV0



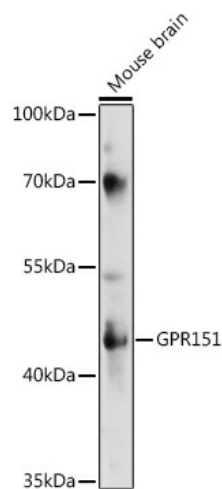
[View online »](#)

Background:

This gene encodes an orphan member of the class A rhodopsin-like family of G-protein-coupled receptors (GPCRs). Within the rhodopsin-like family, this gene is a member of the SOG subfamily that includes somatostatin, opioid, galanin, and kisspeptin receptors. The orthologous mouse gene has a restricted pattern of neuronal expression which is induced following nerve injury. All GPCRs have a transmembrane domain that includes seven transmembrane alpha-helices. A general feature of GPCR signaling is the agonist-induced conformational change in the receptor, leading to activation of the heterotrimeric G protein. The activated G protein then binds to and activates numerous downstream effector proteins, which generate second messengers that mediate a broad range of cellular and physiological processes.

Synonyms:

C130082O03Rik; GalRL; nGPCR-2037; PGR7

Product images:


Western blot analysis of various lysates using GPR151 Rabbit pAb ([TA376727]) at 1:1000 dilution.

Secondary antibody: HRP-conjugated Goat anti-Rabbit IgG (H+L) (AS014) at 1:10000 dilution.

Lysates/proteins: 25µg per lane.

Blocking buffer: 3% nonfat dry milk in TBST.

Detection: ECL Enhanced Kit (RM00021).

Exposure time: 300s.