

## Product datasheet for **TA376718S**

### GPR108 Rabbit Polyclonal Antibody

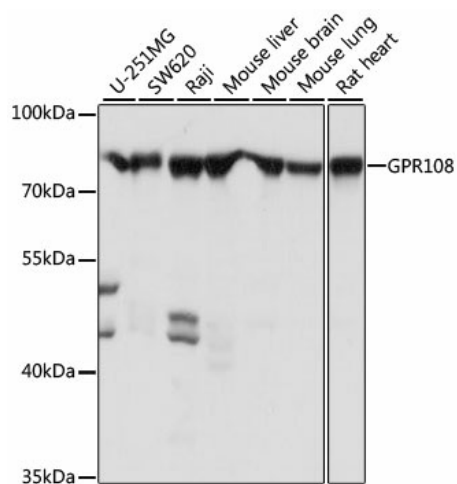
#### Product data:

Product Type:	Primary Antibodies
Applications:	ELISA, WB
Recommended Dilution:	WB, 1:1000 - 1:5000 ELISA, Recommended starting concentration is 1 µg/mL. Please optimize the concentration based on your specific assay requirements.
Reactivity:	Human, Mouse, Rat
Modifications:	Unmodified
Host:	Rabbit
Isotype:	IgG
Clonality:	Polyclonal
Formulation:	PBS with 0.05% proclin300, 50% glycerol, pH7.3.
Concentration:	lot specific
Purification:	Affinity purification
Conjugation:	Unconjugated
Storage:	Store at -20°C. Avoid freeze / thaw cycles.
Stability:	Shelf life: one year from despatch.
Predicted Protein Size:	61kDa
Gene Name:	G protein-coupled receptor 108
Database Link:	<a href="#">Entrez Gene 56927 Human Q9NPR9</a>
Background:	Predicted to be involved in negative regulation of toll-like receptor signaling pathway. Located in trans-Golgi network.
Synonyms:	1810015L19Rik; AA589464; C79132



[View online »](#)

## Product images:



Western blot analysis of various lysates