

Product datasheet for TA376715S

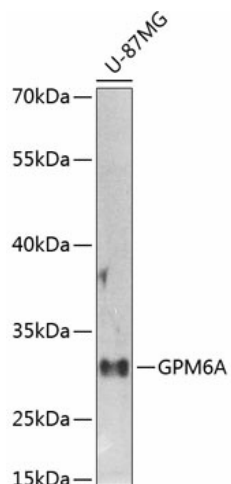
Neuronal membrane glycoprotein M6 a (GPM6A) Rabbit Polyclonal Antibody

Product data:

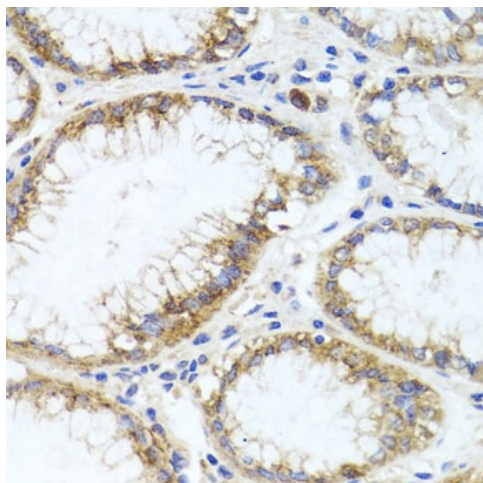
Product Type:	Primary Antibodies
Applications:	ELISA, IHC, WB
Recommended Dilution:	WB, 1:500 - 1:2000 IHC-P, 1:50 - 1:200 ELISA, Recommended starting concentration is 1 µg/mL. Please optimize the concentration based on your specific assay requirements.
Reactivity:	Human, Mouse
Modifications:	Unmodified
Host:	Rabbit
Isotype:	IgG
Clonality:	Polyclonal
Formulation:	Buffer: PBS with 0.02% sodium azide, 50% glycerol, pH 7.3.
Concentration:	lot specific
Purification:	Affinity purification
Conjugation:	Unconjugated
Storage:	Store at -20°C. Avoid freeze / thaw cycles.
Stability:	Shelf life: one year from despatch.
Predicted Protein Size:	31kDa
Gene Name:	glycoprotein M6A
Database Link:	Entrez Gene 2823 Human P51674
Background:	Predicted to enable calcium channel activity. Involved in neuron migration and stem cell differentiation. Located in extracellular exosome.
Synonyms:	M6A; M6a; MGC38999


[View online »](#)

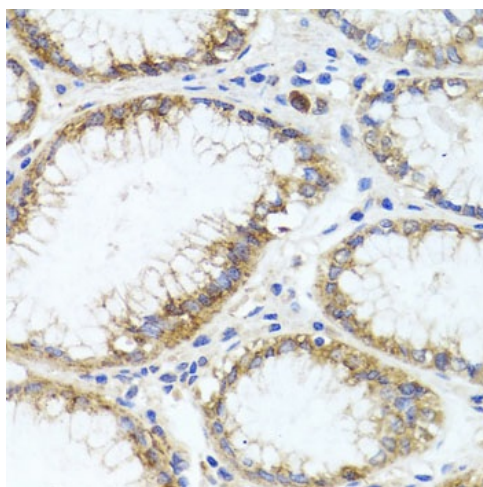
Product images:



Western blot analysis of lysates from U-87MG cells



Immunohistochemistry analysis of paraffin-embedded Mouse stomach using GPM6A Rabbit pAb ([TA376715]) at dilution of 1:100 (40x lens). Microwave antigen retrieval performed with 0.01M PBS Buffer (pH 7.2) prior to IHC staining.



Immunohistochemistry analysis of paraffin-embedded Human stomach using GPM6A Rabbit pAb ([TA376715]) at dilution of 1:100 (40x lens). Microwave antigen retrieval performed with 0.01M PBS Buffer (pH 7.2) prior to IHC staining.