

Product datasheet for **TA376715**

Neuronal membrane glycoprotein M6 a (GPM6A) Rabbit Polyclonal Antibody

Product data:

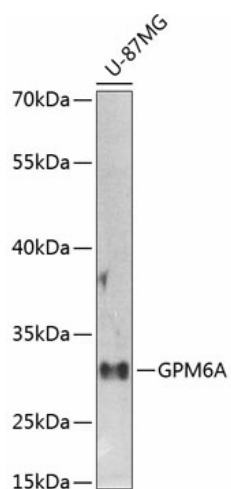
Product Type:	Primary Antibodies
Applications:	IHC, WB
Recommended Dilution:	WB,1:500 - 1:2000 IHC,1:50 - 1:200
Reactivity:	Human, Mouse
Modifications:	Unmodified
Host:	Rabbit
Isotype:	IgG
Clonality:	Polyclonal
Immunogen:	A synthetic peptide corresponding to a sequence within amino acids 1-100 of human GPM6A (NP_005268.1).
Formulation:	Buffer: PBS with 0.02% sodium azide,50% glycerol,pH7.3.
Concentration:	lot specific
Purification:	Affinity purification
Conjugation:	Unconjugated
Storage:	Store at -20°C. Avoid freeze / thaw cycles.
Stability:	Shelf life: one year from despatch.
Predicted Protein Size:	29kDa/30kDa/31kDa
Gene Name:	glycoprotein M6A
Database Link:	Entrez Gene 2823 Human P51674
Background:	Involved in neuronal differentiation, including differentiation and migration of neuronal stem cells. Plays a role in neuronal plasticity and is involved in neurite and filopodia outgrowth, filopodia motility and probably synapse formation. GPM6A-induced filopodia formation involves mitogen-activated protein kinase (MAPK and Src signaling pathways. May be involved in neuronal NGF-dependent Ca ²⁺ influx. May be involved in regulation of endocytosis and intracellular trafficking of G-protein-coupled receptors (GPCRs; enhances internalization and recycling of mu-type opioid receptor.



[View online »](#)

Synonyms: M6A; M6a; MGC38999

Product images:



Western blot analysis of extracts of U-87MG cells, using GPM6A antibody (TA376715) at 1:1000 dilution. | Secondary antibody: HRP Goat Anti-Rabbit IgG (H+L) at 1:10000 dilution. | Lysates/proteins: 25ug per lane. | Blocking buffer: 3% nonfat dry milk in TBST. | Detection: ECL Enhanced Kit . | Exposure time: 30s.