

Product datasheet for **TA376697**

Glypican 3 (GPC3) Rabbit Polyclonal Antibody

Product data:

Product Type:	Primary Antibodies
Applications:	ICC/IF, WB
Recommended Dilution:	WB,1:500 - 1:2000 IF,1:50 - 1:200
Reactivity:	Human, Mouse
Modifications:	Unmodified
Host:	Rabbit
Isotype:	IgG
Clonality:	Polyclonal
Immunogen:	Recombinant fusion protein containing a sequence corresponding to amino acids 290-550 of human Glypican 3 (Glypican 3 (GPC3)) (NP_004475.1).
Formulation:	Buffer: PBS with 0.02% sodium azide,50% glycerol,pH7.3.
Concentration:	lot specific
Purification:	Affinity purification
Conjugation:	Unconjugated
Storage:	Store at -20°C. Avoid freeze / thaw cycles.
Stability:	Shelf life: one year from despatch.
Predicted Protein Size:	59kDa/65kDa/68kDa
Gene Name:	glypican 3
Database Link:	Entrez Gene 2719 Human P51654



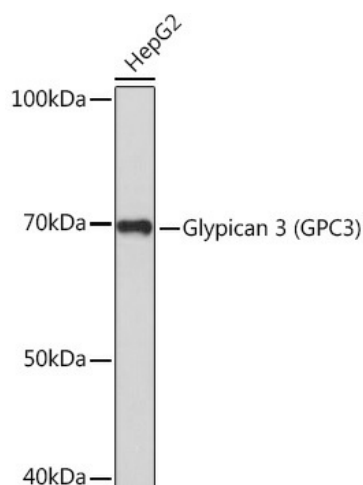
[View online »](#)

Background:

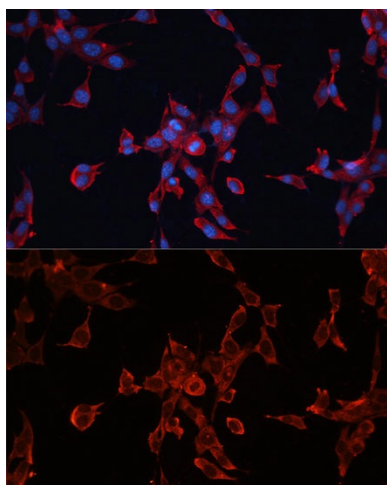
Cell surface heparan sulfate proteoglycans are composed of a membrane-associated protein core substituted with a variable number of heparan sulfate chains. Members of the glypican-related integral membrane proteoglycan family (GRIPS) contain a core protein anchored to the cytoplasmic membrane via a glycosyl phosphatidylinositol linkage. These proteins may play a role in the control of cell division and growth regulation. The protein encoded by this gene can bind to and inhibit the dipeptidyl peptidase activity of CD26, and it can induce apoptosis in certain cell types. Deletion mutations in this gene are associated with Simpson-Golabi-Behmel syndrome, also known as Simpson dysmorphia syndrome. Alternative splicing results in multiple transcript variants.

Synonyms:

DGSX; GTR2-2; MXR7; OCI-5; OCI5; SDYS; SGB; SGBS; SGBS1

Product images:

Western blot analysis of extracts of HepG2 cells, using Glypican 3 (Glypican 3 (GPC3)) Rabbit pAb (TA376697) at 1:1000 dilution. | Secondary antibody: HRP Goat Anti-Rabbit IgG (H+L) at 1:10000 dilution. | Lysates/proteins: 25ug per lane. | Blocking buffer: 3% nonfat dry milk in TBST. | Detection: ECL Basic Kit . | Exposure time: 3min.



Immunofluorescence analysis of NIH-3T3 cells using Glypican 3 (Glypican 3 (GPC3)) Polyclonal Antibody (TA376697) at dilution of 1:100 (40x lens). Blue: DAPI for nuclear staining.