

Product datasheet for **TA376677**

Giantin (GOLGB1) Rabbit Polyclonal Antibody

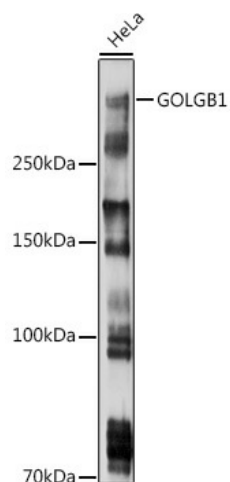
Product data:

Product Type:	Primary Antibodies
Applications:	ICC/IF, IHC, WB
Recommended Dilution:	WB,1:500 - 1:2000 IHC,1:50 - 1:200 IF,1:50 - 1:200
Reactivity:	Human
Modifications:	Unmodified
Host:	Rabbit
Isotype:	IgG
Clonality:	Polyclonal
Immunogen:	Recombinant protein of human GOLGB1.
Formulation:	Buffer: PBS with 0.02% sodium azide,50% glycerol,pH7.3.
Concentration:	lot specific
Purification:	Affinity purification
Conjugation:	Unconjugated
Storage:	Store at -20°C. Avoid freeze / thaw cycles.
Stability:	Shelf life: one year from despatch.
Predicted Protein Size:	376kDa
Gene Name:	golgin B1
Database Link:	Entrez Gene 2804 Human Q14789
Background:	May participate in forming intercisternal cross-bridges of the Golgi complex.
Synonyms:	GCP; GCP372; GIANTIN; GOLIM1; macrogolgin

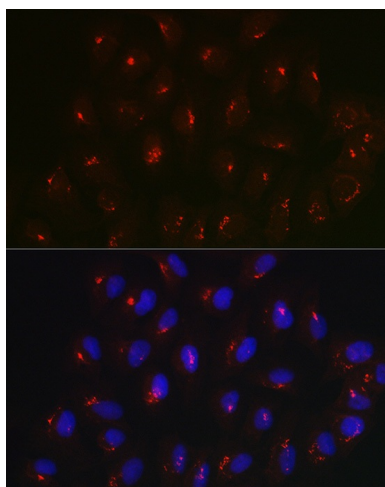


[View online »](#)

Product images:



Western blot analysis of extracts of HeLa cells, using GOLGB1 antibody (TA376677) at 1:1000 dilution. | Secondary antibody: HRP Goat Anti-Rabbit IgG (H+L) at 1:10000 dilution. | Lysates/proteins: 25ug per lane. | Blocking buffer: 3% nonfat dry milk in TBST. | Detection: ECL Basic Kit . | Exposure time: 30s.



Immunofluorescence analysis of U2OS cells using GOLGB1 Rabbit pAb (TA376677) at dilution of 1:150 (40x lens). Blue: DAPI for nuclear staining.