

## Product datasheet for **TA376676S**

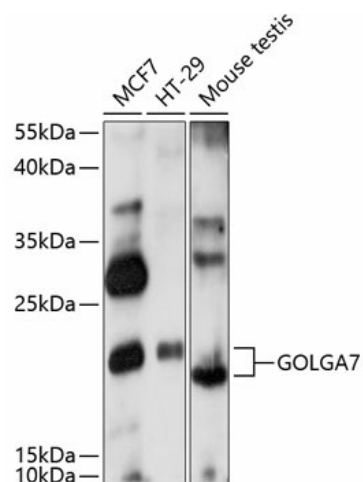
### **GOLGA7 Rabbit Polyclonal Antibody**

#### **Product data:**

Product Type:	Primary Antibodies
Applications:	ELISA, WB
Recommended Dilution:	WB, 1:500 - 1:2000 ELISA, Recommended starting concentration is 1 µg/mL. Please optimize the concentration based on your specific assay requirements.
Reactivity:	Human, Mouse
Modifications:	Unmodified
Host:	Rabbit
Isotype:	IgG
Clonality:	Polyclonal
Formulation:	Buffer: PBS with 0.02% sodium azide, 50% glycerol, pH 7.3.
Concentration:	lot specific
Purification:	Affinity purification
Conjugation:	Unconjugated
Storage:	Store at -20°C. Avoid freeze / thaw cycles.
Stability:	Shelf life: one year from despatch.
Predicted Protein Size:	16kDa
Gene Name:	golgin A7
Database Link:	<a href="#">Entrez Gene 51125 Human Q7Z5G4</a>
Background:	Involved in Golgi to plasma membrane protein transport; peptidyl-L-cysteine S-palmitoylation; and protein stabilization. Acts upstream of or within Golgi to plasma membrane transport. Located in Golgi membrane and Golgi stack. Is intrinsic component of Golgi membrane. Part of palmitoyltransferase complex.
Synonyms:	GCP16; GOLGA3AP1; GOLGA7A; HSPC041; MGC4876; MGC21096



[View online »](#)

**Product images:**


Western blot analysis of various lysates using GOLGA7 Rabbit pAb (TA376676S) at 1:1000 dilution.

Secondary antibody: HRP-conjugated Goat anti-Rabbit IgG (H+L) (AS014) at 1:10000 dilution.

Lysates/proteins: 25µg per lane.

Blocking buffer: 3% nonfat dry milk in TBST.

Detection: ECL Basic Kit (RM00020).

Exposure time: 90s.