

## Product datasheet for **TA376666**

### GNPDA2 Rabbit Polyclonal Antibody

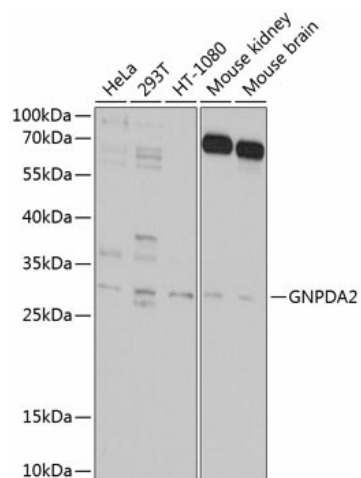
#### Product data:

Product Type:	Primary Antibodies
Applications:	WB
Recommended Dilution:	WB,1:200 - 1:2000
Reactivity:	Human, Mouse
Modifications:	Unmodified
Host:	Rabbit
Isotype:	IgG
Clonality:	Polyclonal
Immunogen:	Recombinant fusion protein containing a sequence corresponding to amino acids 1-190 of human GNPDA2 (NP_612208.1).
Formulation:	Buffer: PBS with 0.02% sodium azide,50% glycerol,pH7.3.
Concentration:	lot specific
Purification:	Affinity purification
Conjugation:	Unconjugated
Storage:	Store at -20°C. Avoid freeze / thaw cycles.
Stability:	Shelf life: one year from despatch.
Predicted Protein Size:	22kDa/27kDa/29kDa/30kDa/31kDa
Gene Name:	glucosamine-6-phosphate deaminase 2
Database Link:	<a href="#">Entrez Gene 132789 Human Q8TDQ7</a>
Background:	The protein encoded by this gene is an allosteric enzyme that catalyzes the reversible reaction converting D-glucosamine-6-phosphate into D-fructose-6-phosphate and ammonium. Variations of this gene have been reported to be associated with influencing body mass index and susceptibility to obesity. A pseudogene of this gene is located on chromosome 9. Alternative splicing results in multiple transcript variants that encode different protein isoforms.
Synonyms:	4921523118Rik; SB52



[View online »](#)

## Product images:



Western blot analysis of extracts of various cell lines, using GNPDA2 antibody (TA376666) at 1:1000 dilution. | Secondary antibody: HRP Goat Anti-Rabbit IgG (H+L) at 1:10000 dilution. | Lysates/proteins: 25ug per lane. | Blocking buffer: 3% nonfat dry milk in TBST. | Detection: ECL Basic Kit . | Exposure time: 30s.