

## Product datasheet for **TA376662**

### **GNL2 Rabbit Polyclonal Antibody**

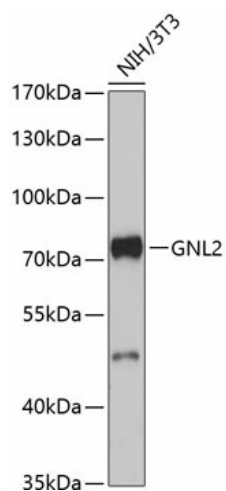
#### **Product data:**

<b>Product Type:</b>	Primary Antibodies
<b>Applications:</b>	WB
<b>Recommended Dilution:</b>	WB,1:500 - 1:2000
<b>Reactivity:</b>	Human, Mouse
<b>Modifications:</b>	Unmodified
<b>Host:</b>	Rabbit
<b>Isotype:</b>	IgG
<b>Clonality:</b>	Polyclonal
<b>Immunogen:</b>	Recombinant fusion protein containing a sequence corresponding to amino acids 1-300 of human GNL2 (NP_037417.1).
<b>Formulation:</b>	Buffer: PBS with 0.02% sodium azide,50% glycerol,pH7.3.
<b>Concentration:</b>	lot specific
<b>Purification:</b>	Affinity purification
<b>Conjugation:</b>	Unconjugated
<b>Storage:</b>	Store at -20°C. Avoid freeze / thaw cycles.
<b>Stability:</b>	Shelf life: one year from despatch.
<b>Predicted Protein Size:</b>	83kDa
<b>Gene Name:</b>	G protein nucleolar 2
<b>Database Link:</b>	<a href="#">Entrez Gene 29889 Human Q13823</a>
<b>Background:</b>	GTPase that associates with pre-60S ribosomal subunits in the nucleolus and is required for their nuclear export and maturation (By similarity. May promote cell proliferation possibly by increasing p53/TP53 protein levels, and consequently those of its downstream product CDKN1A/p21, and decreasing RPL23A protein levels.
<b>Synonyms:</b>	FLJ40906; HUMAUANTIG; Ngp-1; NGP1



[View online »](#)

## Product images:



Western blot analysis of extracts of NIH/3T3 cells, using GNL2 antibody (TA376662) at 1:3000 dilution. | Secondary antibody: HRP Goat Anti-Rabbit IgG (H+L) at 1:10000 dilution. | Lysates/proteins: 25ug per lane. | Blocking buffer: 3% nonfat dry milk in TBST. | Detection: ECL Basic Kit . | Exposure time: 90s.