

Product datasheet for **TA376658**

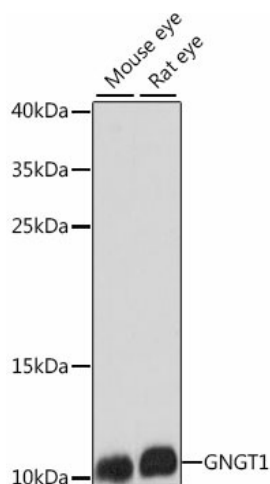
GNGT1 Rabbit Polyclonal Antibody

Product data:

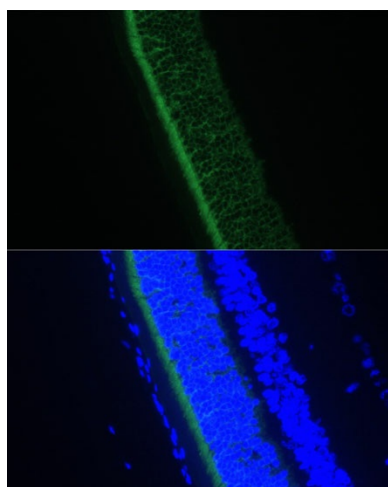
Product Type:	Primary Antibodies
Applications:	ICC/IF, WB
Recommended Dilution:	WB,1:500 - 1:2000 IF,1:50 - 1:100
Reactivity:	Mouse, Rat
Modifications:	Unmodified
Host:	Rabbit
Isotype:	IgG
Clonality:	Polyclonal
Immunogen:	Recombinant fusion protein containing a sequence corresponding to amino acids 1-45 of human GNGT1 (NP_068774.1).
Formulation:	Buffer: PBS with 0.02% sodium azide,50% glycerol,pH7.3.
Concentration:	lot specific
Purification:	Affinity purification
Conjugation:	Unconjugated
Storage:	Store at -20°C. Avoid freeze / thaw cycles.
Stability:	Shelf life: one year from despatch.
Predicted Protein Size:	8kDa
Gene Name:	G protein subunit gamma transducin 1
Database Link:	P63211
Background:	This gene encodes the gamma subunit of transducin, a guanine nucleotide-binding protein (G protein) that is found in rod outer segments. Transducin, also known as GMPase, mediates the activation of a cyclic GTP-specific (guanosine monophosphate) phosphodiesterase by rhodopsin.
Synonyms:	GNG1; OTTHUMP00000208599



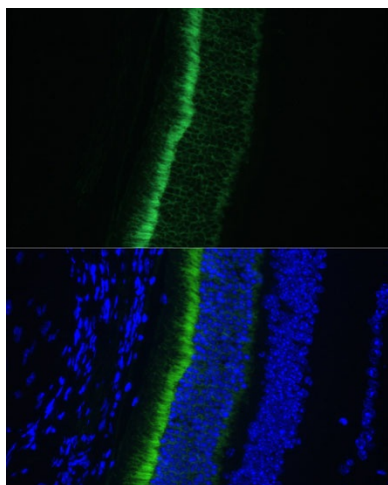
[View online »](#)

Product images:

Western blot analysis of extracts of various cell lines, using GNGT1 antibody (TA376658) at 1:1000 dilution. | Secondary antibody: HRP Goat Anti-Rabbit IgG (H+L) at 1:10000 dilution. | Lysates/proteins: 25ug per lane. | Blocking buffer: 3% nonfat dry milk in TBST. | Detection: ECL Basic Kit. | Exposure time: 90s.



Immunofluorescence analysis of rat eye using GNGT1 Polyclonal Antibody (TA376658) at dilution of 1:100 (40x lens). Blue: DAPI for nuclear staining.



Immunofluorescence analysis of mouse eye using GNGT1 Polyclonal Antibody (TA376658) at dilution of 1:100 (40x lens). Blue: DAPI for nuclear staining.