

## Product datasheet for **TA376631**

### G protein alpha 16 (GNA15) Rabbit Polyclonal Antibody

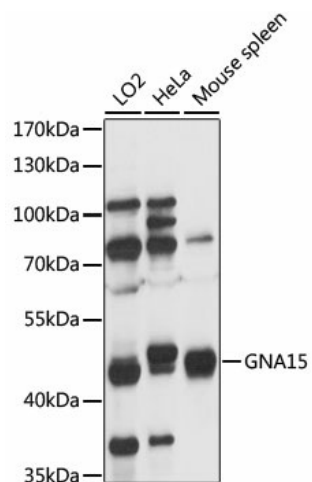
#### Product data:

Product Type:	Primary Antibodies
Applications:	WB
Recommended Dilution:	WB,1:500 - 1:2000
Reactivity:	Human, Mouse
Host:	Rabbit
Isotype:	IgG
Clonality:	Polyclonal
Immunogen:	Recombinant fusion protein containing a sequence corresponding to amino acids 112-374 of human GNA15 (NP_002059.3).
Formulation:	Buffer: PBS with 0.02% sodium azide,50% glycerol,pH7.3.
Concentration:	lot specific
Purification:	Affinity purification
Conjugation:	Unconjugated
Storage:	Store at -20°C. Avoid freeze / thaw cycles.
Stability:	Shelf life: one year from despatch.
Predicted Protein Size:	43kDa
Gene Name:	G protein subunit alpha 15
Database Link:	<a href="#">Entrez Gene 2769 Human P30679</a>
Background:	Guanine nucleotide-binding proteins (G proteins are involved as modulators or transducers in various transmembrane signaling systems.
Synonyms:	GNA16



[View online »](#)

## Product images:



Western blot analysis of extracts of various cell lines, using GNA15 antibody (TA376631) at 1:1000 dilution. | Secondary antibody: HRP Goat Anti-Rabbit IgG (H+L) at 1:10000 dilution. | Lysates/proteins: 25ug per lane. | Blocking buffer: 3% nonfat dry milk in TBST. | Detection: ECL Basic Kit . | Exposure time: 30s.