

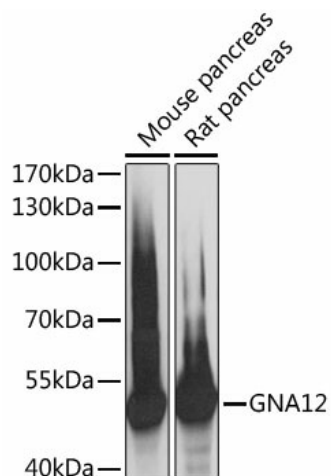
## Product datasheet for TA376629S

### G protein alpha 12 (GNA12) Rabbit Polyclonal Antibody

#### Product data:

Product Type:	Primary Antibodies
Applications:	ELISA, IHC, WB
Recommended Dilution:	WB, 1:500 - 1:2000 IHC-P, 1:50 - 1:200 ELISA, Recommended starting concentration is 1 µg/mL. Please optimize the concentration based on your specific assay requirements.
Reactivity:	Human, Mouse, Rat
Modifications:	Unmodified
Host:	Rabbit
Isotype:	IgG
Clonality:	Polyclonal
Formulation:	Buffer: PBS with 0.02% sodium azide, 50% glycerol, pH 7.3.
Concentration:	lot specific
Purification:	Affinity purification
Conjugation:	Unconjugated
Storage:	Store at -20°C. Avoid freeze / thaw cycles.
Stability:	Shelf life: one year from despatch.
Predicted Protein Size:	44kDa
Gene Name:	G protein subunit alpha 12
Database Link:	<a href="#">Entrez Gene 2768 Human Q03113</a>
Background:	Predicted to enable D5 dopamine receptor binding activity; G-protein beta/gamma-subunit complex binding activity; and GTPase activity. Involved in regulation of TOR signaling and regulation of proteasomal ubiquitin-dependent protein catabolic process. Located in focal adhesion.
Synonyms:	gep; MGC99644; MGC104623; NNX3; RMP; WUGSC:H_GS165O14.2


[View online »](#)

**Product images:**


Western blot analysis of various lysates using GNA12 Rabbit pAb ([TA376629]) at 1:3000 dilution.

Secondary antibody: HRP-conjugated Goat anti-Rabbit IgG (H+L) (AS014) at 1:10000 dilution.

Lysates/proteins: 25µg per lane.

Blocking buffer: 3% nonfat dry milk in TBST.

Detection: ECL Basic Kit (RM00020).

Exposure time: 1s.