

## Product datasheet for **TA376629**

### G protein alpha 12 (GNA12) Rabbit Polyclonal Antibody

#### Product data:

Product Type:	Primary Antibodies
Applications:	IHC, WB
Recommended Dilution:	WB,1:500 - 1:2000 IHC,1:50 - 1:200
Reactivity:	Human, Mouse, Rat
Modifications:	Unmodified
Host:	Rabbit
Isotype:	IgG
Clonality:	Polyclonal
Immunogen:	Recombinant fusion protein containing a sequence corresponding to amino acids 1-200 of human GNA12 (NP_031379.2).
Formulation:	Buffer: PBS with 0.02% sodium azide,50% glycerol,pH7.3.
Concentration:	lot specific
Purification:	Affinity purification
Conjugation:	Unconjugated
Storage:	Store at -20°C. Avoid freeze / thaw cycles.
Stability:	Shelf life: one year from despatch.
Predicted Protein Size:	34kDa/37kDa/44kDa
Gene Name:	G protein subunit alpha 12
Database Link:	<a href="#">Entrez Gene 2768 Human Q03113</a>



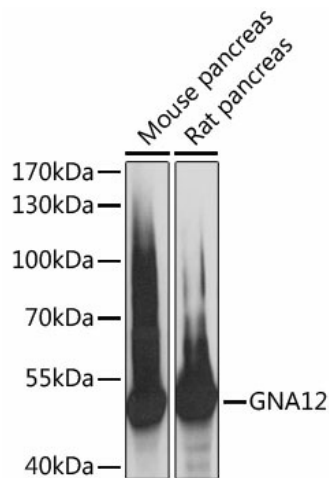
[View online »](#)

**Background:**

Guanine nucleotide-binding proteins (G proteins) are involved as modulators or transducers in various transmembrane signaling systems. Activates effector molecule RhoA by binding and activating RhoGEFs (ARHGEF12/LARG). GNA12-dependent Rho signaling subsequently regulates transcription factor AP-1 (activating protein-1) (By similarity). GNA12-dependent Rho signaling also regulates protein phosphatase 2A activation causing dephosphorylation of its target proteins. Promotes tumor cell invasion and metastasis by activating RhoA/ROCK signaling pathway and up-regulating proinflammatory cytokine production. Inhibits CDH1-mediated cell adhesion in process independent from Rho activation. Together with NAPA promotes CDH5 localization to plasma membrane. May play a role in the control of cell migration through the TOR signaling cascade.

**Synonyms:**

gpc; MGC99644; MGC104623; NNX3; RMP; WUGSC:H\_GS165O14.2

**Product images:**

Western blot analysis of extracts of various cell lines, using GNA12 antibody (TA376629) at 1:3000 dilution. | Secondary antibody: HRP Goat Anti-Rabbit IgG (H+L) at 1:10000 dilution. | Lysates/proteins: 25ug per lane. | Blocking buffer: 3% nonfat dry milk in TBST. | Detection: ECL Basic Kit . | Exposure time: 1s.