

## Product datasheet for **TA376622**

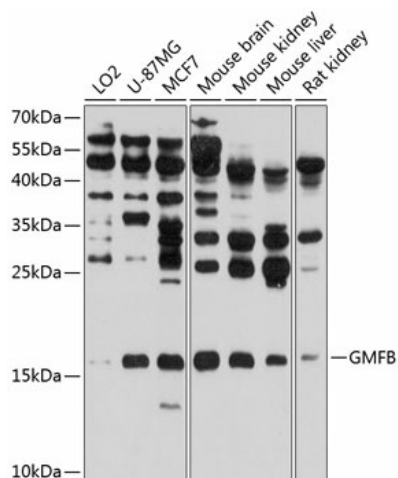
### GMF beta (GMFB) Rabbit Polyclonal Antibody

#### Product data:

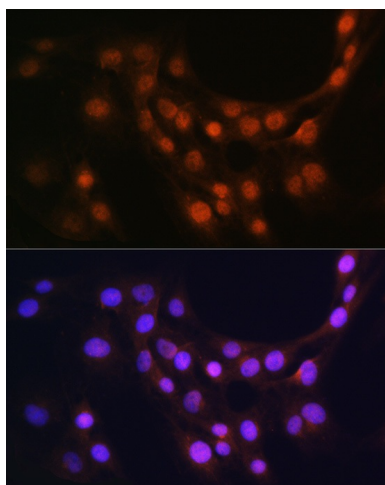
Product Type:	Primary Antibodies
Applications:	ICC/IF, WB
Recommended Dilution:	WB,1:200 - 1:2000 IF,1:50 - 1:200
Reactivity:	Human, Mouse, Rat
Modifications:	Unmodified
Host:	Rabbit
Isotype:	IgG
Clonality:	Polyclonal
Immunogen:	Recombinant fusion protein containing a sequence corresponding to amino acids 1-140 of human GMFB (NP_004115.1).
Formulation:	Buffer: PBS with 0.02% sodium azide,50% glycerol,pH7.3.
Concentration:	lot specific
Purification:	Affinity purification
Conjugation:	Unconjugated
Storage:	Store at -20°C. Avoid freeze / thaw cycles.
Stability:	Shelf life: one year from despatch.
Predicted Protein Size:	16kDa
Gene Name:	glia maturation factor beta
Database Link:	<a href="#">Entrez Gene 2764 Human P60983</a>
Background:	GMFB is a nerve growth factor which belongs to the actin-binding proteins ADF family, GMF subfamily.GMFB is involved in nervous system development, angiogenesis and immune function. It is especially crucial for the nervous system. GMFB causes brain cell differentiation, stimulates neural regeneration and inhibits tumor cell proliferation. GMFB overexpression in astrocytes results in the increase of BDNF production.
Synonyms:	GMF; GMF-beta



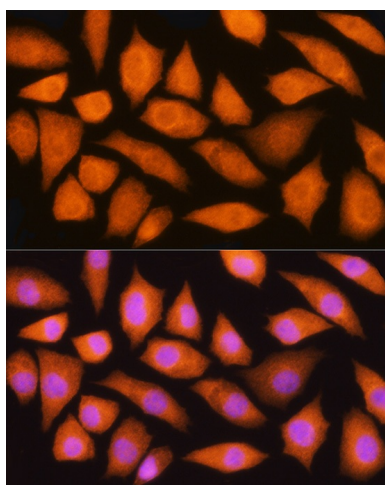
[View online »](#)

**Product images:**


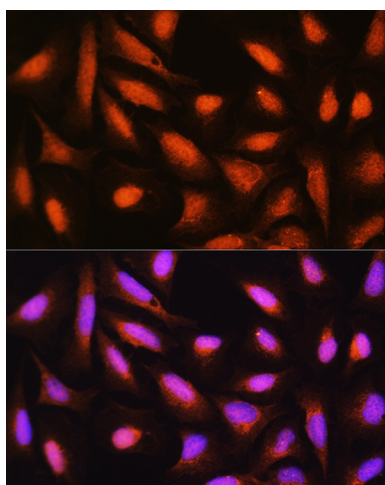
Western blot analysis of extracts of various cell lines, using GMFB antibody (TA376622) at 1:1000 dilution. | Secondary antibody: HRP Goat Anti-Rabbit IgG (H+L) at 1:10000 dilution. | Lysates/proteins: 25ug per lane. | Blocking buffer: 3% nonfat dry milk in TBST. | Detection: ECL Basic Kit . | Exposure time: 30s.



Immunofluorescence analysis of C6 cells using GMFB Rabbit pAb (TA376622) at dilution of 1:100 (40x lens). Blue: DAPI for nuclear staining.



Immunofluorescence analysis of L929 cells using GMFB Rabbit pAb (TA376622) at dilution of 1:100 (40x lens). Blue: DAPI for nuclear staining.



Immunofluorescence analysis of U-2 OS cells using GMFB Rabbit pAb (TA376622) at dilution of 1:100 (40x lens). Blue: DAPI for nuclear staining.