

## Product datasheet for **TA376616**

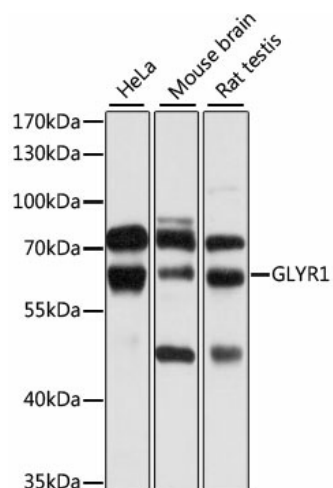
### GLYR1 Rabbit Polyclonal Antibody

#### Product data:

Product Type:	Primary Antibodies
Applications:	ELISA, WB
Recommended Dilution:	WB, 1:500 - 1:2000 ELISA, Recommended starting concentration is 1 µg/mL. Please optimize the concentration based on your specific assay requirements.
Reactivity:	Human, Mouse, Rat
Modifications:	Unmodified
Host:	Rabbit
Isotype:	IgG
Clonality:	Polyclonal
Formulation:	Buffer: PBS with 0.02% sodium azide, 50% glycerol, pH 7.3.
Concentration:	lot specific
Purification:	Affinity purification
Conjugation:	Unconjugated
Storage:	Store at -20°C. Avoid freeze / thaw cycles.
Stability:	Shelf life: one year from despatch.
Predicted Protein Size:	61kDa
Gene Name:	glyoxylate reductase 1 homolog
Database Link:	<a href="#">Entrez Gene 84656 Human Q49A26</a>
Background:	Enables DNA binding activity; methylated histone binding activity; and nucleosome binding activity. Involved in positive regulation of histone acetylation and positive regulation of transcription by RNA polymerase II. Located in cytosol and nucleoplasm. Part of nucleosome.
Synonyms:	2810419J22Rik; 3930401K13Rik; 3930401k13rik; AW545332; N-pac; Npac; RGD1309459



[View online »](#)

**Product images:**


Western blot analysis of various lysates using GLYR1 Rabbit pAb (TA376616) at 1:1000 dilution. Secondary antibody: HRP-conjugated Goat anti-Rabbit IgG (H+L) (AS014) at 1:10000 dilution. Lysates/proteins: 25µg per lane. Blocking buffer: 3% nonfat dry milk in TBST. Detection: ECL Basic Kit (RM00020). Exposure time: 5s.