

Product datasheet for **TA376612S**

GLUD2 Rabbit Polyclonal Antibody

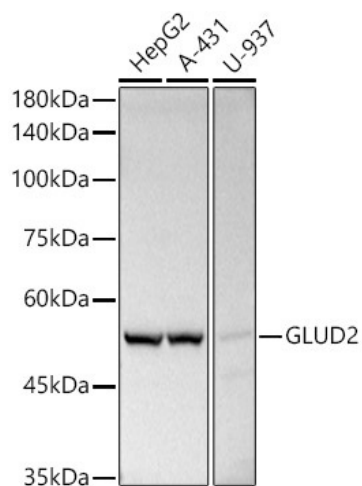
Product data:

Product Type:	Primary Antibodies
Applications:	ICC/IF, IHC, WB
Recommended Dilution:	WB,1:500 - 1:2000 IHC,1:50 - 1:200 IF,1:10 - 1:100
Reactivity:	Human, Mouse, Rat
Modifications:	Unmodified
Host:	Rabbit
Isotype:	IgG
Clonality:	Polyclonal
Immunogen:	Recombinant fusion protein containing a sequence corresponding to amino acids 319-558 of human GLUD2 (NP_036216.2).
Formulation:	Buffer: PBS with 0.02% sodium azide,50% glycerol,pH7.3.
Concentration:	lot specific
Purification:	Affinity purification
Conjugation:	Unconjugated
Storage:	Store at -20°C. Avoid freeze / thaw cycles.
Stability:	Shelf life: one year from despatch.
Predicted Protein Size:	61kDa
Gene Name:	glutamate dehydrogenase 2
Database Link:	Entrez Gene 2747 Human P49448
Background:	The protein encoded by this gene is localized to the mitochondrion and acts as a homo-hexamer to recycle glutamate during neurotransmission. The encoded enzyme catalyzes the reversible oxidative deamination of glutamate to alpha-ketoglutarate. This gene is intronless.
Synonyms:	GDH; GDH2; GLUDP1

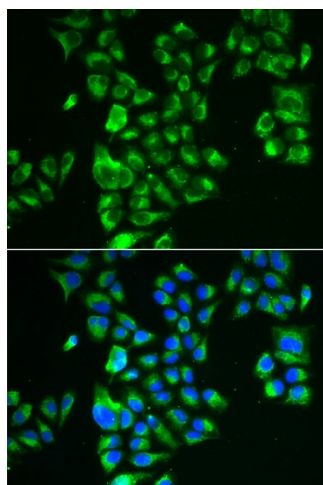


[View online »](#)

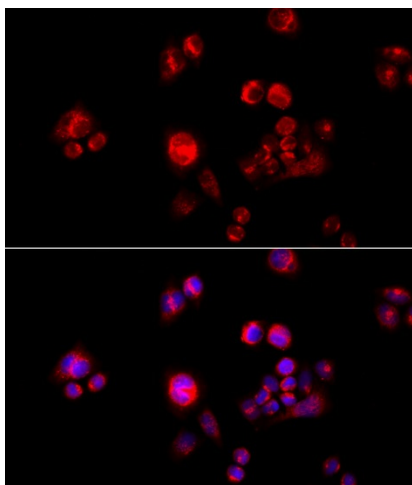
Product images:



Western blot analysis of extracts of various cell lines, using GLUD2 antibody ([TA376612]) at 1:500 dilution. | Secondary antibody: HRP Goat Anti-Rabbit IgG (H+L) at 1:10000 dilution. | Lysates/proteins: 25ug per lane. | Blocking buffer: 3% nonfat dry milk in TBST. | Detection: ECL Basic Kit . | Exposure time: 10s.



Immunofluorescence analysis of A549 cells using GLUD2 antibody ([TA376612]). Blue: DAPI for nuclear staining.



Immunofluorescence analysis of HeLa cells using GLUD2 antibody ([TA376612]) at dilution of 1:100 (40x lens). Blue: DAPI for nuclear staining.