

Product datasheet for **TA376611S**

GLUD1 Rabbit Polyclonal Antibody

Product data:

Product Type:	Primary Antibodies
Applications:	ICC/IF, IHC, IP, WB
Recommended Dilution:	WB,1:500 - 1:2000 IHC,1:100 - 1:200 IF,1:50 - 1:200 IP,1:50 - 1:200
Reactivity:	Human, Mouse, Rat
Modifications:	Unmodified
Host:	Rabbit
Isotype:	IgG
Clonality:	Polyclonal
Immunogen:	Recombinant fusion protein containing a sequence corresponding to amino acids 54-240 of human GLUD1 (NP_005262.1).
Formulation:	PBS with 0.09% Sodium azide,50% glycerol,pH7.3.
Concentration:	lot specific
Purification:	Affinity purification
Conjugation:	Unconjugated
Storage:	Store at -20°C. Avoid freeze / thaw cycles.
Stability:	Shelf life: one year from despatch.
Predicted Protein Size:	42kDa/46kDa/61kDa
Gene Name:	glutamate dehydrogenase 1
Database Link:	Entrez Gene 2746 Human P00367



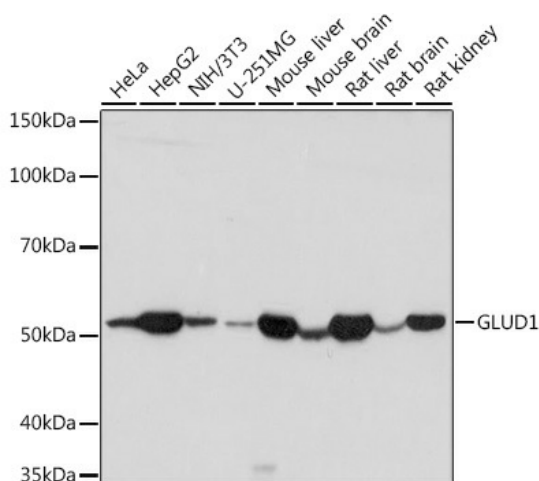
[View online »](#)

Background:

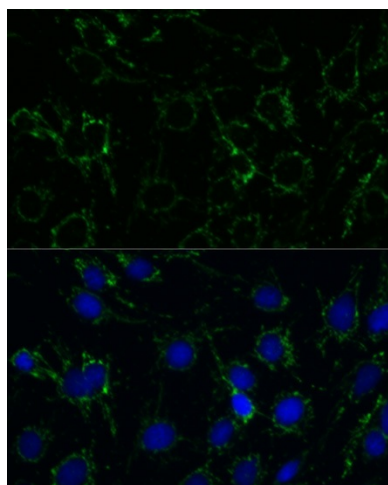
This gene encodes glutamate dehydrogenase, which is a mitochondrial matrix enzyme that catalyzes the oxidative deamination of glutamate to alpha-ketoglutarate and ammonia. This enzyme has an important role in regulating amino acid-induced insulin secretion. It is allosterically activated by ADP and inhibited by GTP and ATP. Activating mutations in this gene are a common cause of congenital hyperinsulinism. Alternative splicing of this gene results in multiple transcript variants. The related glutamate dehydrogenase 2 gene on the human X-chromosome originated from this gene via retrotransposition and encodes a soluble form of glutamate dehydrogenase. Related pseudogenes have been identified on chromosomes 10, 18 and X.

Synonyms:

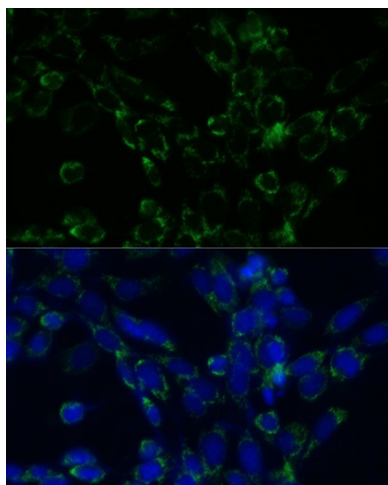
GDH; GDH1; GLUD; MGC132003

Product images:


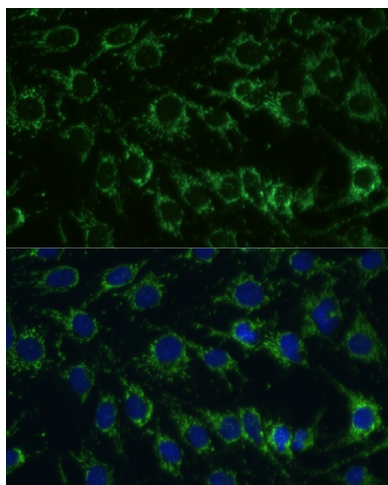
Western blot analysis of extracts of various cell lines, using GLUD1 antibody ([TA376611]) at 1:1000 dilution. | Secondary antibody: HRP Goat Anti-Rabbit IgG (H+L) at 1:10000 dilution. | Lysates/proteins: 25ug per lane. | Blocking buffer: 3% nonfat dry milk in TBST. | Detection: ECL Basic Kit . | Exposure time: 10s.



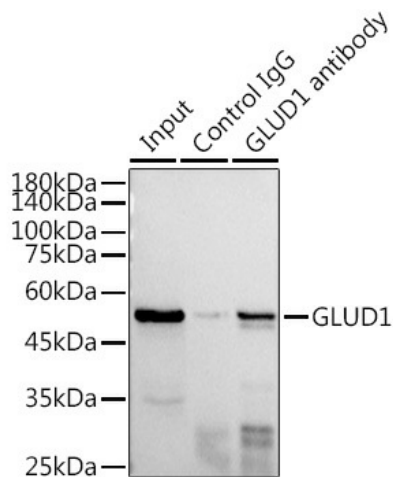
Immunofluorescence analysis of C6 cells using GLUD1 antibody ([TA376611]) at dilution of 1:100. Blue: DAPI for nuclear staining.



Immunofluorescence analysis of NIH-3T3 cells using GLUD1 antibody ([TA376611]) at dilution of 1:100. Blue: DAPI for nuclear staining.



Immunofluorescence analysis of C6 cells using GLUD1 antibody ([TA376611]) at dilution of 1:100. Blue: DAPI for nuclear staining.



Immunoprecipitation analysis of 300ug extracts of HepG2 cells using 3ug GLUD1 antibody ([TA376611]). Western blot was performed from the immunoprecipitate using GLUD1 antibody ([TA376611]) at a dilution of 1:1000.