

Product datasheet for **TA376611**

GLUD1 Rabbit Polyclonal Antibody

Product data:

| | |
|-------------------------|--|
| Product Type: | Primary Antibodies |
| Applications: | ICC/IF, IHC, IP, WB |
| Recommended Dilution: | WB,1:500 - 1:2000 IHC,1:100 - 1:200 IF,1:50 - 1:200 IP,1:50 - 1:200 |
| Reactivity: | Human, Mouse, Rat |
| Modifications: | Unmodified |
| Host: | Rabbit |
| Isotype: | IgG |
| Clonality: | Polyclonal |
| Immunogen: | Recombinant fusion protein containing a sequence corresponding to amino acids 54-240 of human GLUD1 (NP_005262.1). |
| Formulation: | Buffer: PBS with 0.02% sodium azide,50% glycerol,pH7.3. |
| Concentration: | lot specific |
| Purification: | Affinity purification |
| Conjugation: | Unconjugated |
| Storage: | Store at -20°C. Avoid freeze / thaw cycles. |
| Stability: | Shelf life: one year from despatch. |
| Predicted Protein Size: | 42kDa/46kDa/61kDa |
| Gene Name: | glutamate dehydrogenase 1 |
| Database Link: | Entrez Gene 2746 Human P00367 |



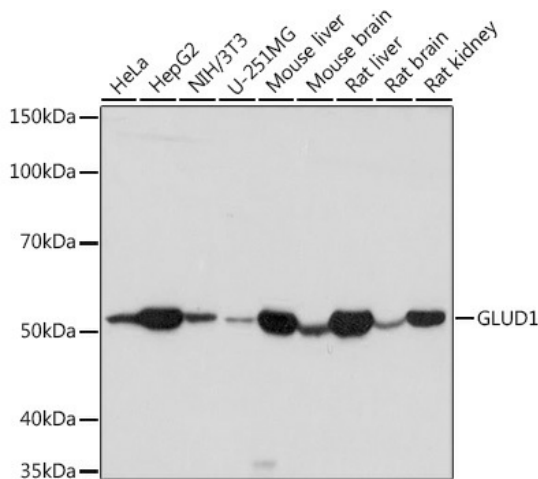
[View online »](#)

Background:

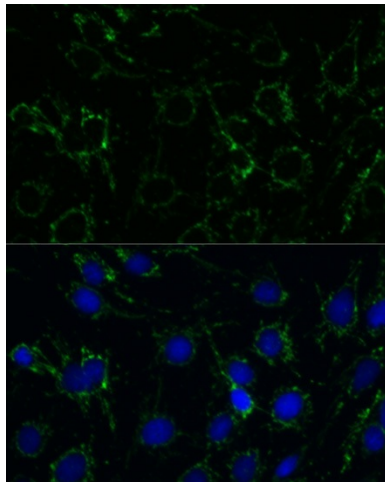
This gene encodes glutamate dehydrogenase, which is a mitochondrial matrix enzyme that catalyzes the oxidative deamination of glutamate to alpha-ketoglutarate and ammonia. This enzyme has an important role in regulating amino acid-induced insulin secretion. It is allosterically activated by ADP and inhibited by GTP and ATP. Activating mutations in this gene are a common cause of congenital hyperinsulinism. Alternative splicing of this gene results in multiple transcript variants. The related glutamate dehydrogenase 2 gene on the human X-chromosome originated from this gene via retrotransposition and encodes a soluble form of glutamate dehydrogenase. Related pseudogenes have been identified on chromosomes 10, 18 and X.

Synonyms:

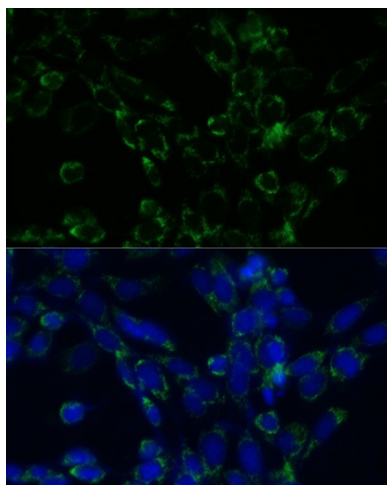
GDH; GDH1; GLUD; MGC132003

Product images:


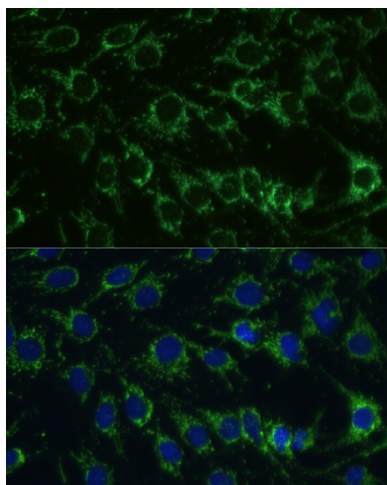
Western blot analysis of extracts of various cell lines, using GLUD1 antibody (TA376611) at 1:1000 dilution. | Secondary antibody: HRP Goat Anti-Rabbit IgG (H+L) at 1:10000 dilution. | Lysates/proteins: 25ug per lane. | Blocking buffer: 3% nonfat dry milk in TBST. | Detection: ECL Basic Kit . | Exposure time: 10s.



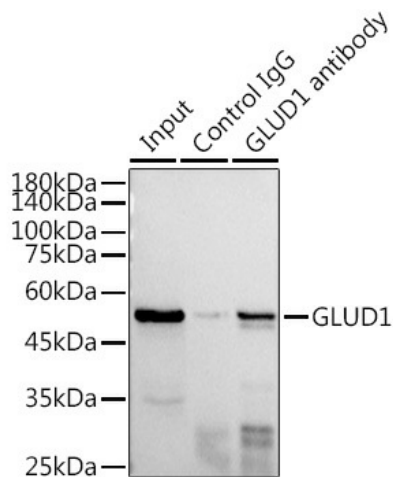
Immunofluorescence analysis of C6 cells using GLUD1 antibody (TA376611) at dilution of 1:100. Blue: DAPI for nuclear staining.



Immunofluorescence analysis of NIH-3T3 cells using GLUD1 antibody (TA376611) at dilution of 1:100. Blue: DAPI for nuclear staining.



Immunofluorescence analysis of C6 cells using GLUD1 antibody (TA376611) at dilution of 1:100. Blue: DAPI for nuclear staining.



Immunoprecipitation analysis of 300ug extracts of HepG2 cells using 3ug GLUD1 antibody (TA376611). Western blot was performed from the immunoprecipitate using GLUD1 antibody (TA376611) at a dilution of 1:1000.