

## Product datasheet for **TA376609**

### Glutaminase (GLS) Rabbit Polyclonal Antibody

#### Product data:

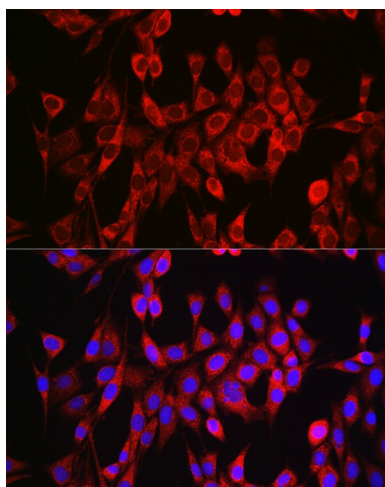
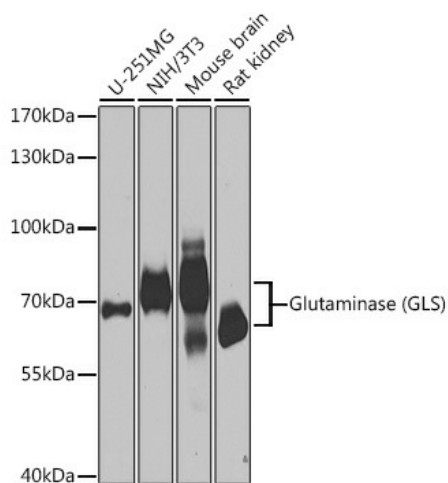
Product Type:	Primary Antibodies
Applications:	ICC/IF, WB
Recommended Dilution:	WB,1:500 - 1:2000 IF,1:50 - 1:200
Reactivity:	Human, Mouse, Rat
Modifications:	Unmodified
Host:	Rabbit
Isotype:	IgG
Clonality:	Polyclonal
Immunogen:	Recombinant fusion protein containing a sequence corresponding to amino acids 610-669 of human Glutaminase (Glutaminase (GLS)) (NP_055720.3).
Formulation:	Buffer: PBS with 0.02% sodium azide,50% glycerol,pH7.3.
Concentration:	lot specific
Purification:	Affinity purification
Conjugation:	Unconjugated
Storage:	Store at -20°C. Avoid freeze / thaw cycles.
Stability:	Shelf life: one year from despatch.
Predicted Protein Size:	17kDa/65kDa/73kDa
Gene Name:	glutaminase
Database Link:	<a href="#">Entrez Gene 2744 Human O94925</a>
Background:	This gene encodes the K-type mitochondrial glutaminase. The encoded protein is an phosphate-activated amidohydrolase that catalyzes the hydrolysis of glutamine to glutamate and ammonia. This protein is primarily expressed in the brain and kidney plays an essential role in generating energy for metabolism, synthesizing the brain neurotransmitter glutamate and maintaining acid-base balance in the kidney. Alternate splicing results in multiple transcript variants.

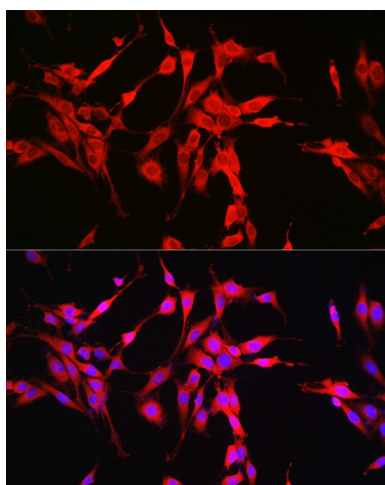


[View online »](#)

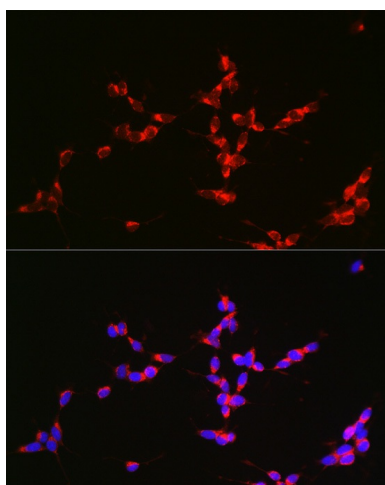
Synonyms: AAD20; DKFZp686O15119; FLJ10358; GLS1; glutaminase; K-glutaminase; KIAA0838

### Product images:





Immunofluorescence analysis of PC-12 cells using Glutaminase (GLS) antibody (TA376609) at dilution of 1:150. Blue: DAPI for nuclear staining.



Immunofluorescence analysis of SH-SY5Y cells using Glutaminase (GLS) antibody (TA376609) at dilution of 1:150. Blue: DAPI for nuclear staining.