

Product datasheet for **TA376593**

GLG1 Rabbit Polyclonal Antibody

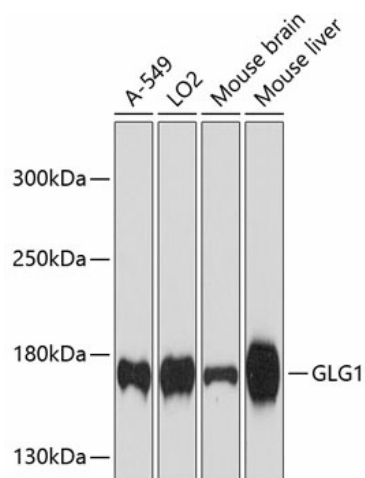
Product data:

Product Type:	Primary Antibodies
Applications:	WB
Recommended Dilution:	WB,1:500 - 1:1000
Reactivity:	Human, Mouse
Modifications:	Unmodified
Host:	Rabbit
Isotype:	IgG
Clonality:	Polyclonal
Immunogen:	Recombinant fusion protein containing a sequence corresponding to amino acids 974-1203 of human GLG1 (NP_036333.2).
Formulation:	Buffer: PBS with 0.02% sodium azide,50% glycerol,pH7.3.
Concentration:	lot specific
Purification:	Affinity purification
Conjugation:	Unconjugated
Storage:	Store at -20°C. Avoid freeze / thaw cycles.
Stability:	Shelf life: one year from despatch.
Predicted Protein Size:	134kDa/135kDa/137kDa
Gene Name:	golgi glycoprotein 1
Database Link:	Entrez Gene 2734 Human Q92896
Background:	Binds fibroblast growth factor and E-selectin (cell-adhesion lectin on endothelial cells mediating the binding of neutrophils.
Synonyms:	CFR-1; CFR1; DKFZp686L08213; ESL-1; ESL1; FLJ23319; FLJ23967; FLJ32797; MG-160; MG160



[View online »](#)

Product images:



Western blot analysis of extracts of various cell lines, using GLG1 antibody (TA376593) at 1:3000 dilution. | Secondary antibody: HRP Goat Anti-Rabbit IgG (H+L) at 1:10000 dilution. | Lysates/proteins: 25ug per lane. | Blocking buffer: 3% nonfat dry milk in TBST. | Detection: ECL Enhanced Kit. | Exposure time: 90s.