

Product datasheet for **TA376556S**

GGCX Rabbit Polyclonal Antibody

Product data:

Product Type:	Primary Antibodies
Applications:	WB
Recommended Dilution:	WB,1:500 - 1:2000
Reactivity:	Human, Mouse
Modifications:	Unmodified
Host:	Rabbit
Isotype:	IgG
Clonality:	Polyclonal
Immunogen:	Recombinant fusion protein containing a sequence corresponding to amino acids 479-758 of human GGCX (NP_000812.2).
Formulation:	Buffer: PBS with 0.02% sodium azide,50% glycerol,pH7.3.
Concentration:	lot specific
Purification:	Affinity purification
Conjugation:	Unconjugated
Storage:	Store at -20°C. Avoid freeze / thaw cycles.
Stability:	Shelf life: one year from despatch.
Predicted Protein Size:	80kDa/87kDa
Gene Name:	gamma-glutamyl carboxylase
Database Link:	Entrez Gene 2677 Human P38435



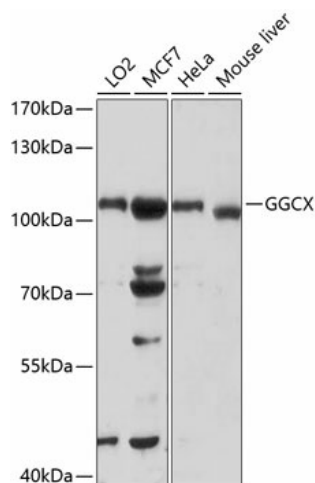
[View online »](#)

Background:

This gene encodes an integral membrane protein of the rough endoplasmic reticulum that carboxylates glutamate residues of vitamin K-dependent proteins to gamma carboxyl glutamate, a modification that is required for their activity. The vitamin K-dependent protein substrates have a propeptide that binds the enzyme, with carbon dioxide, dioxide, and reduced vitamin K acting as co-substrates. Vitamin K-dependent proteins affect a number of physiologic processes including blood coagulation, prevention of vascular calcification, and inflammation. Allelic variants of this gene have been associated with pseudoxanthoma elasticum-like disorder with associated multiple coagulation factor deficiency. Alternative splicing results in multiple transcript variants.

Synonyms:

FLJ26629; GC; VKCFD1

Product images:

Western blot analysis of extracts of various cell lines, using GG CX antibody ([TA376556]) at 1:1000 dilution. | Secondary antibody: HRP Goat Anti-Rabbit IgG (H+L) at 1:10000 dilution. | Lysates/proteins: 25ug per lane. | Blocking buffer: 3% nonfat dry milk in TBST. | Detection: ECL Basic Kit . | Exposure time: 90s.