

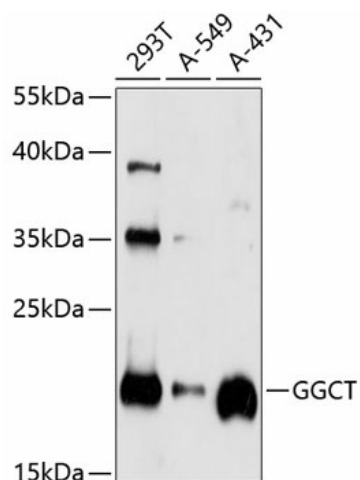
Product datasheet for TA376555S

GGCT Rabbit Polyclonal Antibody

Product data:

| | |
|-------------------------|--|
| Product Type: | Primary Antibodies |
| Applications: | ELISA, WB |
| Recommended Dilution: | WB, 1:500 - 1:2000 ELISA, Recommended starting concentration is 1 µg/mL. Please optimize the concentration based on your specific assay requirements. |
| Reactivity: | Human |
| Modifications: | Unmodified |
| Host: | Rabbit |
| Isotype: | IgG |
| Clonality: | Polyclonal |
| Formulation: | Buffer: PBS with 0.02% sodium azide, 50% glycerol, pH 7.3. |
| Concentration: | lot specific |
| Purification: | Affinity purification |
| Conjugation: | Unconjugated |
| Storage: | Store at -20°C. Avoid freeze / thaw cycles. |
| Stability: | Shelf life: one year from despatch. |
| Predicted Protein Size: | 21kDa |
| Gene Name: | gamma-glutamylcyclotransferase |
| Database Link: | Entrez Gene 79017 Human O75223 |
| Background: | The protein encoded by this gene catalyzes the formation of 5-oxoproline from gamma-glutamyl dipeptides, the penultimate step in glutathione catabolism, and may play a critical role in glutathione homeostasis. The encoded protein may also play a role in cell proliferation, and the expression of this gene is a potential marker for cancer. Pseudogenes of this gene are located on the long arm of chromosome 5 and the short arm of chromosomes 2 and 20. Alternatively spliced transcript variants encoding multiple isoforms have been observed for this gene. |
| Synonyms: | C7orf24; CRF21; FLJ11717; gamma-glutamylcyclotransferase; GCTG; Ggc; MGC3077 |


[View online »](#)

Product images:


Western blot analysis of various lysates using GGCT Rabbit pAb (TA376555S) at 1:1000 dilution. Secondary antibody: HRP-conjugated Goat anti-Rabbit IgG (H+L) (AS014) at 1:10000 dilution. Lysates/proteins: 25µg per lane. Blocking buffer: 3% nonfat dry milk in TBST. Detection: ECL Basic Kit (RM00020). Exposure time: 90s.