

## Product datasheet for **TA376550S**

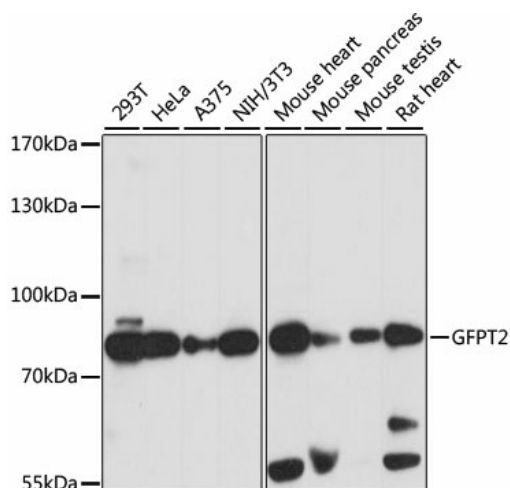
### GFPT2 Rabbit Polyclonal Antibody

#### Product data:

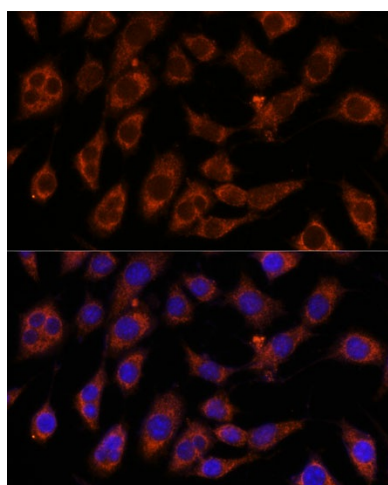
|                         |  |
|-------------------------|--|
| Product Type:           | Primary Antibodies   |
| Applications:           | ICC/IF, WB   |
| Recommended Dilution:   | WB,1:200 - 1:2000<br>IF,1:50 - 1:200   |
| Reactivity:             | Human, Mouse, Rat  |
| Modifications:          | Unmodified   |
| Host:                   | Rabbit   |
| Isotype:                | IgG  |
| Clonality:              | Polyclonal   |
| Immunogen:              | Recombinant fusion protein containing a sequence corresponding to amino acids 200-260 of human GFPT2 (NP_005101.1).  |
| Formulation:            | Buffer: PBS with 0.02% sodium azide,50% glycerol,pH7.3.  |
| Concentration:          | lot specific   |
| Purification:           | Affinity purification  |
| Conjugation:            | Unconjugated   |
| Storage:                | Store at -20°C. Avoid freeze / thaw cycles.  |
| Stability:              | Shelf life: one year from despatch.  |
| Predicted Protein Size: | 76kDa  |
| Gene Name:              | glutamine-fructose-6-phosphate transaminase 2  |
| Database Link:          | <a href="#">Entrez Gene 9945 Human O94808</a>  |
| Background:             | Controls the flux of glucose into the hexosamine pathway. Most likely involved in regulating the availability of precursors for N- and O-linked glycosylation of proteins. |
| Synonyms:               | FLJ10380; GFAT2  |



[View online »](#)

**Product images:**


Western blot analysis of extracts of various cell lines, using GFPT2 antibody ([TA376550]) at 1:1000 dilution. | Secondary antibody: HRP Goat Anti-Rabbit IgG (H+L) at 1:10000 dilution. | Lysates/proteins: 25ug per lane. | Blocking buffer: 3% nonfat dry milk in TBST. | Detection: ECL Basic Kit . | Exposure time: 3s.



Immunofluorescence analysis of L929 cells using GFPT2 antibody ([TA376550]) at dilution of 1:100. Blue: DAPI for nuclear staining.