

## Product datasheet for **TA376543S**

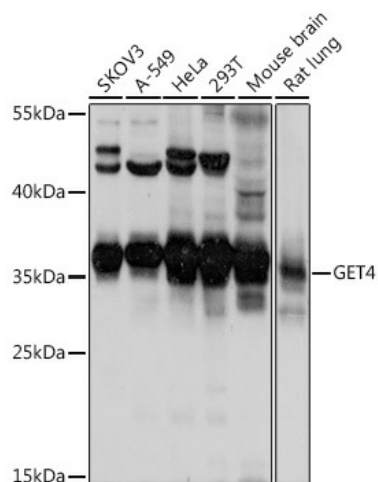
### CEE (GET4) Rabbit Polyclonal Antibody

#### Product data:

Product Type:	Primary Antibodies
Applications:	ELISA, WB
Recommended Dilution:	WB, 1:500 - 1:2000 ELISA, Recommended starting concentration is 1 µg/mL. Please optimize the concentration based on your specific assay requirements.
Reactivity:	Human, Mouse, Rat
Modifications:	Unmodified
Host:	Rabbit
Isotype:	IgG
Clonality:	Polyclonal
Formulation:	Buffer: PBS with 0.02% sodium azide, 50% glycerol, pH 7.3.
Concentration:	lot specific
Purification:	Affinity purification
Conjugation:	Unconjugated
Storage:	Store at -20°C. Avoid freeze / thaw cycles.
Stability:	Shelf life: one year from despatch.
Predicted Protein Size:	37kDa
Gene Name:	golgi to ER traffic protein 4
Database Link:	<a href="#">Entrez Gene 51608 Human Q7L5D6</a>
Background:	Enables chaperone binding activity. Involved in cytoplasmic sequestering of protein; maintenance of unfolded protein involved in ERAD pathway; and tail-anchored membrane protein insertion into ER membrane. Located in chromosome; cytosol; and nuclear lumen. Part of BAT3 complex.
Synonyms:	1110007L15Rik; AW412535; Cee



[View online »](#)

**Product images:**


Western blot analysis of various lysates using GET4 Rabbit pAb (TA376543) at 1:1000 dilution. Secondary antibody: HRP-conjugated Goat anti-Rabbit IgG (H+L) (AS014) at 1:10000 dilution. Lysates/proteins: 25µg per lane. Blocking buffer: 3% nonfat dry milk in TBST. Detection: ECL Basic Kit (RM00020). Exposure time: 3s.